



# THE ROCKHOUND

Official publication of the Gem & Mineral Society of the Palm Beaches, Inc.  
[www.gemandmineral.cc](http://www.gemandmineral.cc)

November 2010 Volume 45 Issue 3

The next general membership meeting will be held

**Thursday November 18, 2010**

7:30 PM at the West Palm Beach Garden Club  
4800 Dreher Trail North, West Palm Beach, FL 33405-3018

## November Program

This month's program will be a presentation by Eddie Rucks on opals from around the world.

## President's Message

November is here already and that doesn't just mean TURKEY ! It's my favorite weekend of the year – Our Annual Show ! We still need volunteers. If you're a member, you're a volunteer, so show your pride in our club and help where ever you can. Make this our best show ever !!!! Our Holiday Party will be fun AND yummy ! Make plans to attend – you'll be glad you did ! It will be a great end to another wonderful year.

It is also time for nominating next year's Officers. Give the positions some thought - you might be the right one ! Nominations from the floor are welcome.

Rock on fellow "Hounds".

Michelle Renné

Please turn to page 2 for the report from the  
Nominating Committee

**Our Annual Gem, Mineral, Fossil, Bead and Jewelry Show is HERE!!!**

**VOLUNTEERS STILL NEEDED for the  
ANNUAL GEM AND MINERAL SHOW NOV 20 -21.**

Slots for security, demos, and display cases are still available. Please contact Barbara Ringheiser 561-588-5458, Jay Sonnenburg 262-902-6247 (display cases) and Kelly Azore 561-688-7903 (demos).

## RENEWAL TIME IS HERE....

Dues for the GMSPB are due by the end of the year. Please take the time to renew now and avoid the rush. There is a renewal form included with this issue of the Rockhound.

"For whereas the mind works in possibilities, the intuitions work in actualities, and what you intuitively desire, that is possible to you. Whereas what you mentally or ""consciously"" desire is nine times out of ten impossible; hitch your wagon to star, or you will just stay where you are."

*David H. Lawrence*

**November Birthdays**

Synae Augustin	Maria Bacinich	Marilyn Gewirtz	Lauren Gralnizk
Barbara Lackey	Mary Marzano	Nina Murray	Regina Nance
Tracey Norris	Andy Pilas	Valerie Pulchtopek	Barbro Rosenberg
Bill Rozinski	Mari Santoro	Sy Schweitzer	Jeff Slutzky
Martha Swogger			

**Club Purpose**

To associate persons of the Palm Beach area of Florida who are interested in earth sciences, to work together as an organization in the gathering, cutting, displaying, and studying of rocks, shells, artifacts, and any kind of scientific objects of interest to the individual and the organization, to promote community interest in these objects.

**2011 Nominating Committee**

The committee submitted the following slate of officers for election in December:

President	Michelle Renné
1st VP	Jen Ursillo
2nd VP	Barbara Ringhiser
Secretary	Nina Murray
Treasurer	Marv Berkowitz

Nomination will be accepted from the floor at the November and December meetings, with elections to be held in December. If you are interested in an office and would like information about office responsibilities, etc. Feel free to contact any of the current Board, or the Nominating Committee.

Nominating Committee:

Ron Ketelaar (561-252-8674), KC Foster (561-968-5287), Lo Rain (827-5793)

**NEWSLETTER SUBMISSIONS**

Please have items for the next **ROCKHOUND** by **November 30th**. Submissions can be emailed to [BNMJJEFF@AOL.COM](mailto:BNMJJEFF@AOL.COM)  
Or you can call Jeff Ursillo 561-706-9549

**Door Prizes.....Raffle Items**

November door prize: Rose quartz beads.

Raffle prizes: Copper wire wrapped pendant, dendritic quartz in matrix, a CZ ring, flat round shell beads for stringing, plus some surprises.

We are always looking for extra prizes to put out for the raffle. If you are thinning out your collection, doing some spring cleaning or just feeling generous, bring whatever you would like to donate to a meeting and give it to me.

*Harriet Flashenburg  
Raffle Coordinator*

**\*\*\*\*\*REMINDER\*\*\*\*\***

The Board would like to remind everyone that there is **NO** selling at the regular membership meetings. The TY Park outings as well as the December member's sale are available for selling. Bringing items in for an informal "Show and Tell" is fine, but not for sale.

There is **NO PARKING** in the circular drive or on the grass bordering it in front of the Garden Club. We can park in the Parking lot that is across from the Museum, or in the grass field to the west of the Garden Club (left side of the building as you face the front door).

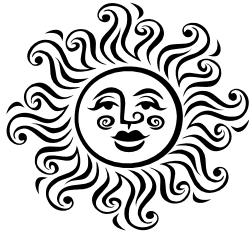
The Rockhound  
Copyright 2010  
by the

Gem & Mineral Society of the Palm Beaches, Inc.

Permission to reprint original material herein not otherwise copyrighted is granted provided credit is given to both author and publication.  
Articles not bylined are by the Editor.

**The Society is on Facebook!**

Search Facebook for Gem and Mineral, bookmark it and become a “fan” when you get there.



**Sunshine Committee**

Do you know anyone who is not feeling up to par, has been sick or injured, lost a loved one? Or on the silver lining side of things, do you know anyone who has

achieved a goal, won a personal victory, or just something that deserves recognition? The Gem & Mineral Society has a Sunshine Committee to send cards and words of comfort and support and congratulations to those members who are in need or are deserving of it.

Call Lo Rain at 561-827-5793 and let her know what needs to be done!

**Show Committee Meeting**

The next Show Committee meeting will be **Monday, November 15, 7:30 pm at the shop.** Anyone interested in being a Committee Chair or just curious as to the process of putting the show on is welcome.

Jay Sonnenburg will be handling the exhibit case sign-up and setup this year. If you are interested in putting in a case, please let Jay know at 262-902-6247.

Kelly Azor is handling the Demonstration area. Call her at 561-688-7903 or 561-635-7619.

**ANNUAL HOLIDAY PARTY AND INSTALLATION OF OFFICERS**

This year’s party will be held on Saturday, December 11 at Ellie’s 50’s Diner in the Flamingo Ballroom, 2410 North Federal Hwy, Delray Beach, FL 33483, (561) 276-7716. (Ellie’s is located exactly half way between Atlantic Ave. and Woolbright Road on the west side of Federal Highway.)

At 6 pm, we will have hors d’oeuvres (fruit, cheese, crackers) and cash bar. At 7 pm we will have a buffet featuring roast beef and ham carving station, mahi-mahi, Chicken Francaise, vegetable medley, red bliss potatoes and baked ziti. Dessert will be a large sheet cake and a “Sundae bar” !!!!! Dance floor area and music provided by CD’s (bring your favorites).

If you have had your 4 hours of volunteer time at the show there is no charge for the buffet. Tickets for guests are \$10. We will have our Holiday gift exchange as well. Bring a gift (**hobby related**) with a minimum value of \$10.00 and mark it for a man or women if necessary. You will receive a gift only if you bring one!

RSVP to Michelle Renné at 561-969-3291 by December 7 if you are planning to attend.

**MICROMOUNTERS**

**Save the first Thursday of the month.....**

All are welcome. If you would like to see a new world of beautiful, symmetrical, colorful, minerals, please join us. We have giveaways at every meeting, and, usually some yummy munchies.. feel free to bring munchies, drinks, microscope (if you have one), and an open mind... Directions? Questions?

Call KC Foster at 561-968-5287

**Interested in Advertising in the Rockhound?**

Contact Editor Jeff Ursillo at [bnmjjeff@aol.com](mailto:bnmjjeff@aol.com) or 561-706-9549 for rates and availability

## Minutes of the October 21, 2010 Membership Meeting

President **Michelle Renné** opened the meeting with the Pledge of Allegiance, and greeted several new visitors like Tammie who came all the way from Miami and wants to participate in our field trips. Several people brought their moms, one brought his son, the two visiting yoga instructors are interested in crystals and two other visitors were enthusiastically interested in taking classes. We welcome you all and hope you return and join our club.

The club wished **Kelly Azore, Arlene Lazarro** and all members with October Birthdays a Happy Birthday!

**Newsletter:** Hopefully, everyone is receiving their excellent newsletter, *The Rockhound*. If you are not receiving it, or would like to receive The Rockhound online, please let editor **Jeff Ursillo** know at [bmnjeff@aol.com](mailto:bmnjeff@aol.com).

Minutes were accepted as printed in the Rockhound with the following correction: We'd like to thank **Bonnie Watts** and **Donna Sypniewski** for preparing the delicious refreshments for the September meeting. We'd also like to thank **Debbie Anderson** for her tasty refreshments at the October meeting.

**Membership:** with no new memberships, **Aurora Siegl** reported our club membership is still 160 members. She encouraged people to sign up for 2011 now since joining in Oct, Nov, or December entitles all to membership privileges for the remainder of 2010 and all of 2011.

**Classes:** **Michelle Renné** announced that the Class Notebook with information on classes, pictures of what is made in each class and instructor information is always available during the meetings. If you are interested in taking a class, contact the instructor listed in the Class Notebook. Hazel Levin enameling class is offered on 2 different days at the shop. Check the class listing in the Rockhound and contact Hazel if you are interested

Just a general note about classes – make use of the amazing experience that some of our members have to offer. They are willing to share their knowl-

edge and expertise for a very reasonable class fee. Classes are enjoyable on many levels and the feeling of leaving the class with a self created project or piece of jewelry is priceless.

**Website:** **Jeff Ursillo** reported that the website has been getting lots of hits, people are downloading the discount admission coupon, and some of the newcomers mentioned that they attended the meeting because of the website! Thank you, Jeff!

**Library:** will reopen in November.

### Show report on the upcoming annual Gem and Mineral Show, Nov 20-21:

**Barbara Ringheiser**, show chair, reported that all available dealer booths for the show have been filled! Barbara still needs volunteers, however, especially for security. Security for the club would mean walking around during the show observing people and making sure that there is no shoplifting or disturbances. If you notice anything amiss, simply tell either Expo's security people or Sherriff's department officers who will be there and also walking around in an official security capacity.

Barbara also reported that advertising for the show includes the Palm Beach Post, WJNO radio, post card mailings, flyers, school newspapers, and multiple websites. The flyers were printed on the flipside in Spanish. This year's Post ad will be in the Accent Section as opposed to the TGIF section.

**Jay Sonnenburg** filled a show display case with lovely examples of crystals, geodes and minerals and reported that there are still plenty of cases left if anyone wants to display their collections or their creations at the Gem and Mineral show in Nov. There are 30 cases available for the show and only 13 cases taken so far! If interested, please contact **Jay at 262-902-6247**. If you prepare a case for the show, it will count as 2 volunteer hours towards attending the Annual Gem and Mineral Banquet in Dec 11 for free. See below for more details on the Banquet.

**Kelly Azore** asked for any pictures of previous shows, shops, classes, field trips, etc. so that the club

can have a slide show running continuously at the demo table.

Kelley also asked for volunteers for demonstrations on Sunday. We would encourage you to share your talent, whether it is in cab cutting, glass fusing, cabochon making, enameling, beading, lampworking, wire wrapping, rock identification, jewelry making, etc.!

**Jeff Ursillo**, show co-chair, reported that thousands of flyers with discount coupons were available for distribution and encouraged members to take as many as they could and leave them in strategic places – doctors offices, work place, wherever you are able and allowed to leave them.

Barbara further reported that if you volunteer for 4 hours you will be able to attend the Annual Gem and Mineral Banquet in December for free. So regardless of whether you volunteer 4 hours for set up, take down, demo, security, ticket taker, door prize sitter, etc., if you have 4 hours, you will be eligible. Making a display case is equivalent to 2 hours of volunteer time.

The Annual Gem and Mineral Banquet will be held Saturday, December 11, at the banquet hall of Ellie's Diner in Delray. The menu will include hors d'oeuvres of cheese and fruit, a carving station with beef and pork, additional entrees of mahi mahi, chicken francese, baked ziti, salad, and two different desserts.

The Show Committee has spent many many hours of hard work in putting this show together. The amount of coordination needed for such a large undertaking is enormous and the shows are consistently excellent, interesting and diverse. You might want to thank a show committee member for their awesome efforts the next time you see them!

**TELL YOUR FRIENDS AND FAMILY ABOUT THE SHOW!**

Discount coupons available on the website:  
www.gemandmineral.cc

**DID WE MENTION - TELL YOUR FRIENDS AND FAMILY ABOUT THE SHOW!?!**

**INCENTIVE!** If you volunteer for 4 hours or more, you will be able to attend the Annual Gem and Mineral Banquet in December for free! A display case is worth 2 hours of volunteer time.

**Shop report: Jeff Ursillo** reported that the shop is doing well. Call the shop stewards ahead of time to ensure that someone will be there. If you use the shop for the first time, you will have to sign a waiver. Also, waivers must be signed annually, so all members using the shop need to sign the waiver at the beginning of each new year – or the first time they use the shop in the new year, regardless of experience.

**Field Trips: Michelle Renné** reported that Ruck's Pit yielded many fossils this year. Eddie had found much new material and had made it available to all during his "Open Pit Days" in October.

**KC Foster** reported that the Smithsonian speaker and Smithsonian Exhibit were excellent at the Miami club which meets monthly at the Miami Science Museum across from Vizcaya.

The Fall Topokeegee Yugnee Park (TY Park) picnic, held in conjunction with the Broward and Dade gem and mineral clubs took place October 3 with food, fun and display tables. Every participant brings their own silverware and plates and a side to share. The next TY Park outing will be in January.

**Alan Meltzer** will be displaying his very fine collection of petrified wood and agates on Saturday, October 23, 2010 at 7 pm. He opens his home several times a year to interested rockhounds. Bring a dessert and Alan provides the remaining hearty repast. If you have not seen his excellent and extensive collection, call Alan at 561 471-3491 to sign up for the next available showing.

The Peace River is down more than a foot and low enough so that even Michelle and Paul can stand in the river without drowning! Michelle is possibly considering Saturday October 30 as a field trip to either Brownsville, Zolfo Springs or Arcadia Peace River sites. Call Michelle Renné if you're interested.

**Programs: Samantha Lazarro** reported that Eddie Rucks will be presenting the November program.

**Election of Officers:** Nominating committee will be formed in time to have a report in the November Rockhound and at the general membership meeting in November. Nominations will be accepted from

the floor at the November and December meetings. If you are interested holding office, please talk to a member of the Nominating Committee for a description of what the office entails. Offices being voted on are: President, 1st Vice President, 2nd Vice President, Secretary, and Treasurer.

**Raffle: Harriet Flashenburg** called the door prize raffle. Next month will include additional raffle prizes.

**Show and Sell:** Several members set up, displayed their creative talents and sold their lovely wares. In alphabetical order, the following members participated in the Show and Sell: **Samantha Lazzaro** (jewelry, fused glass, lapidary, minerals) and **Arlene Lazzaro** (jewelry, lampworking, wirework), **Alan Meltzer** (fossils, geodes, mineral specimens), **Michelle Renné** (jewelry, beading, sterling art clay, metal working,) **Sy Schweitzer** (lapidary, cabochons, wire work, jewelry), **Deb Slutzsky** (jewelry, findings, wirework, fossils, crystals), **Jeff Ursillo** (cabochons, slabs, fossils) and **Duane Young** (fossils, geodes and mineral specimens).

*Minutes submitted by Aurora Siegl.*

"In photography there is a reality so subtle that it becomes more real than reality."

----- *Alfred Stieglitz*

### Why do we have a show??

Good question! There is more than one answer, depending on whether you are a Participant or an Observer.

1. The annual show gives the Society members an opportunity to **Show Off** the work they have done or the specimens they have collected.
2. It is an **Event** which is looked forward to annually. It is a great time to renew acquaintances with friends and fellow rockhounds from near and far.
3. It is **Educational**. Looking at the cases, watching the demonstrators, talking with them and asking questions, is a "Crash Course" in the many "facets" of the hobby.
4. It **Promotes the Hobby**. By word of mouth, brochures, tickets, etc., members can spread the hobby to those who might not know about it.

So you see, it is not something we put on just for our own enjoyment. It is an important educational event for the West Palm Beach area. You can be proud to be a **Gem & Mineral Society member** and to be there to make the show a great success!

### Procrastination

The ability to put off to Tomorrow what should have been done Yesterday.

Three simple steps to success.

Do it. Do it right. Do it right now.

### Board Meeting Attendance 2010

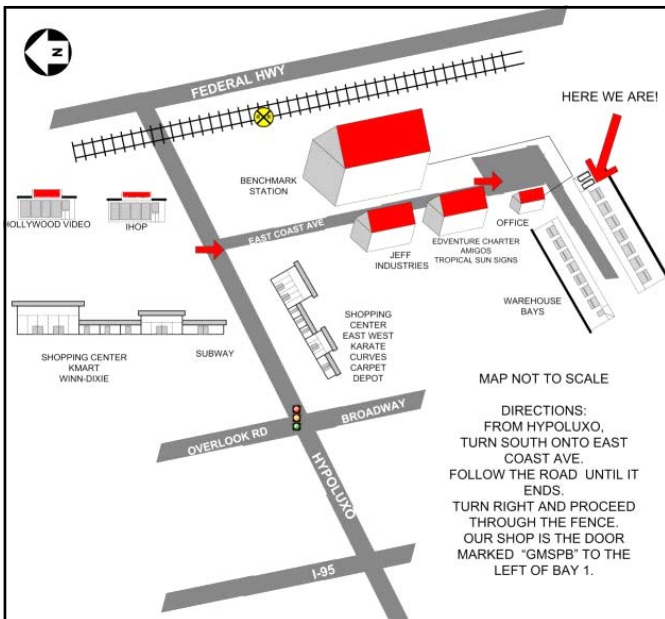
For general information. SB (snow bird) means up North for the summer, SBR means up north and reporting to Board.

Board Member	JAN	FEB	MAR	APR	MAY	JUN	JUL	AUG	SEP	OCT	NOV	DEC
M. Renné	Y	Y	Y	Y	Y	Y	NO MTG	NO MTG	Y	Cancelled	Y	
Jen Ursillo	Y	A	Y	Y	Y	Y	NO MTG	NO MTG	Y	Cancelled	Y	
S. Lazzaro	Y	Y	Y	Y	A	Y	NO MTG	NO MTG	Y	Cancelled	Y	
N. Murray	Y	Y	A	Y	Y	Y	NO MTG	NO MTG	A	Cancelled	Y	
M. Berkowitz	Y	Y	Y	Y	Y	SB	NO MTG	NO MTG	SBR	Cancelled	Y	
B. Ringhiser	Y	A	Y	Y	Y	Y	NO MTG	NO MTG	Y	Cancelled	Y	
A. Siegl	Y	Y	Y	A	A	Y	NO MTG	NO MTG	Y	Cancelled	Y	
J. Ursillo	Y	Y	Y	Y	Y	Y	NO MTG	NO MTG	Y	Cancelled	Y	

The **ROCKHOUND**

Official publication of the Gem & Mineral Society of the Palm Beaches, Inc.

**Where is the GMSPB's shop???**



We would like to extend a special **Thank You** to all of our advertisers!

Please be sure to patronize them and thank them for Supporting the Society.

**GEMSTONE AND BEAD**

Direct Importers  
Wholesale to the Public

Your one stop shop for  
Gemstones, Flatbacks,  
Findings, Tools and Displays.

Make your own Jewelry  
and Gifts  
Free Classes Saturdays  
Lowest Prices

**1937 N. Military Trail Ste #1**  
**West Palm beach**  
**On the SW Corner of**  
**Military & Okeechobee**  
**687-3663**

**CLASSIFIED ADS**

FROM A MEMBER LOOKING TO PURCHASE PETRI-  
FIED WOOD, AND LAPIDARY EQUIPMENT.

DON CHENOWETH, SR  
352-601-5119  
email: dhctravelingman@tampabay.rr.com

**Garage sale Moving**

Selling individually designed necklaces  
by "KALA of Palm Beach"  
Incredibly low prices  
Call Kala 561-733-1590



**MANUFACTURED** AN AMERICAN OWNED ADVERTISING  
COMPANY FEATURING ONLY  
PRODUCTS MADE IN THE U.S.A.  
BE SURE TO VISIT OUR WEB PAGE:

[www.manufacturedinusa.net](http://www.manufacturedinusa.net)  
EMAIL: SALES@MANUFACTUREDINUSA.NET  
[www.manufacturedinusa.us](http://www.manufacturedinusa.us)

RUTH CHENOWETH President OFFICE: (352) 419-4145  
DON CHENOWETH SR. Secretary CELL: (352) 601-5119

Don, Past President, Ruth, Past Secretary of the  
Gem and Mineral Society



**ResMac**

Residential Mortgage Acceptance Corp.  
1401 Sawgrass Corporate Parkway  
Sunrise, Florida 33323

Cell 561-271-3895  
karendorsey@bellsouth.net

Karen Dorsey  
Senior Mortgage Originator

[www.resmac.us](http://www.resmac.us)



**DANNYSVAN.COM**  
PASSENGER TRANSPORT SERVICE  
AIRPORTS • SEAPORTS • EVENTS • CONCERTS • PUB CRAWLS

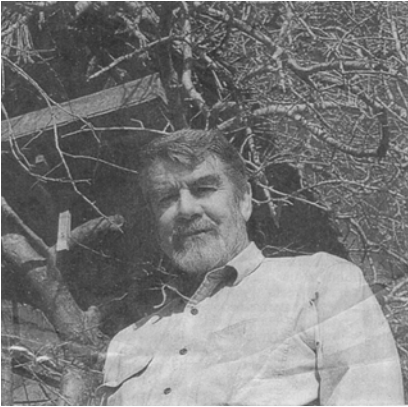
**DANNY'S VAN**

Let us provide all your transportation  
• Airports • Seaports • Events • Concerts • Pub Crawls

Courteous & Prompt • Licensed & Insured • Firefighter Owned

561.271.1661 • [www.DannysVan.com](http://www.DannysVan.com)

## The discovery of tanzanite...



It all began, Campbell Bridges liked to say, the day a charging cape buffalo forced him to flee into a ravine. That was where he discovered a cache of small green garnets that turned out to be the making of his career.

Mr. Bridges went on to become the leading miner of tsavorite, the gemstone he first sighted in 1961 in Zimbabwe. A geologist and an African adventurer known for living in a tree house and setting a cobra to scare off intruders at his mine, Mr. Bridges was a legendary figure in the world of gemology.

But his high profile also might have attracted the attention of criminals. Licensed by Kenyan authorities to operate a mine, Mr. Bridges was killed Aug. 11 at age 71 in a confrontation with suspected illegal prospectors. Soon after bringing tsavorite to the attention of gemologists in the U.S. in the early 1970's, Mr. Bridges became the stone's foremost pitchman. He appeared in the 1970s in ads from Tiffany & Co. touting "the brilliant green gemstone that is far more durable and far less expensive than emeralds." Before Mr. Bridges discovered the mineral, which was named for the Tsavo national parks near where his mine was located, "only giraffes and other African animals knew about tsavorite," the ads claimed. Born in Scotland, Mr. Bridges was raised in South Africa, the son of a mining engineer who bestowed on his son the deed to an amethyst mine at age six. It was the beginning of what Mr. Bridges' son, Bruce Bridges, calls "his endless love of the continent and the joy of gemstones."

After training in geology and learning to cut gems in Germany, Mr. Bridges worked as a prospector in East Africa. He panned for gold in Kenya and looked for emeralds. It was while searching for beryllium, an element of emeralds used to shield nuclear reactors of the day, that Mr. Bridges had his run-in with the cape buffalo, resulting in the discovery of tsavorite.

"It is uncommon for a new gemstone to be discovered," says Robert Weldon, a gemologist at the Gemological Institute of America. "He did the gemological world a great service."

In 1967, Mr. Bridges discovered another deposit of tsavorite

in northern Tanzania, and commenced mining operations. After Tanzania in 1910 asserted more state control over mining, Mr. Bridges traced the gem-bearing geological formation north, across the border into Kenya. There he set up what became his Scorpion Mine, named for the eight-inch specimens that infested the area. To avoid the scorpions, army ants and other hazardous fauna including lions, Mr. Bridges took to living in tree houses, 25 feet off the ground. "They are safe and cool," he told a jewelry trade magazine in 2007. "And the views are spectacular."

In the U.S., Mr. Bridges was retained as a consultant by Henry B. Platt, president of Tiffany, which bought quantities of tsavorite as well as another gemstone Mr. Bridges specialized in, blue-purple tanzanite.

"What Campbell did, single-handedly, for colored gemstones and the African species of tanzanite and tsavorite can not be over-stated," says Peter Schneirla, Tiffany's chief gemologist.

Mr. Bridges remained convinced that tsavorite was underpriced at a fraction of the cost of emeralds, and attributed this to the fact that consumers didn't attach to it the same romance that emeralds held.

In recent years, production at Mr. Bridges' mine had slowed as shafts approached 300 feet underground. At the same time, increasing numbers of unlicensed miners appeared in the region. Mr. Bridges reported them to authorities, without much result.

A series of confrontations led up to an ambush Aug. 11 in which a pickup carrying Mr. Bridges, his son, Bruce, and some workers was attacked by up to 30 men armed with spears, machetes and clubs. Campbell Bridges was stabbed in the chest.

Late last month, Kenyan police reported they had arrested a man they described as the mastermind of the attack in which Mr. Bridges was killed.

But Bruce Bridges insists via email from Nairobi that those responsible are still at large. He has hired bodyguards in response to continuing threats.

"I will carry on his work to the best of my ability," Bruce Bridges writes of his father, "and do everything within my power to keep his dream alive."

*by Stephen Miller via the PB post*

---

"I tell people I'm too stupid to know what's impossible. I have ridiculously large dreams, and half the time they come true." ~ Debi Thomas

## Sonora Sunrise Jasper

*From various internet rockhound lists*



Sonoran (or Sonora) Sunrise made it's first debut at the Tucson gem shows this year, according to the Topgems website. A very colorful Cuprite Chrysocolla copper complex that is 100% natural, mined in Mexico. These stones have a slight surface texture due to the varying hardness through the stone. Also,

these stones do not have a super high gloss polish like agate or jasper usually have, they say.

Very little seems to be of "jasper hardness". Most all of the material can be scratched with a pocket knife. Some can be difficult to work due to the hardness differences through the material. Some will undercut badly.

"There is no place to collect it. This material comes from Mina Milpillas, Cuitaca, Mun. de Cananea, Sonora, Mexico. The Milpillas mine lies within the Municipio de Cananea, 17 km north (by road) of the village of Cuitaca, Sonora Mexico. My understanding is that the mine owners stopped letting the workers take out this material as it does have a significant amount of copper in it. So, while more material may exist, all of the mine output is getting crushed as ore."

"It showed up on the market 3 or 4 years ago. It is usually referred to as a combination of chrysocolla and cuprite. I always get a kick out of the description of the "chrysocolla" in this material being blue. While I have seen some actual blue in the Sonora Sunrise material, most is definitely green with no blue anywhere. Yet most descriptions refer to blue. The "cuprite" portion of the material ranges from bright orange to red to a red-purple. The black is probably tenorite."

"The best material had the green/bright orange combination. It is almost impossible to find any orange in the material still on the market. And it is harder to find any without large amounts of black between the green and red/orange. "Retail prices" are \$40-50 per lb. There is a lot of the poorer quality material around for ridiculous asking prices, especially the "mono-color", i.e. predominantly green or predominantly red/orange.

About it's release to the market... "The story online was that an old guy, years ago, was liking what they were pulling out of the mines then and so he filled a front loader with the material then shoveled dirt over the top. Then he would go dump out the "dirt" in a location he only knew about and went back after dark to haul it away. He got quite a pile before he stopped. "

Until recently tiger-eye was considered to be a pseudo-morph. it had long been thought that the crocidolite (asbestos) fibres were replaced with quartz much like the replacement that occurs in petrified wood. New evidence proves that this may not be the case and that quartz and the crocidolite co-exist. Tiger-eye has a fibrous structure and in the lapidary shop must be oriented properly to get the chatoyance and/or the 'cat's eye' effect. Cuts must be exactly parallel to the length of the fibres to get full chatoyance. If the saw cut is perpendicular or 90° to the fibers, you will end up with a lifeless, dark brown or black stone, with no chatoyance of light play at all. Orientation of cutting is critical in getting good chatoyance and color out of tiger eye.

The fibers in tiger-eye may be up to 50mm long and very thin. Most are only 0.001 mm in diameter and are not always straight, making it even harder at times to cut good chatoyant stones.

*Reproduced from Topgems via SMAL-talk.*

## Bench Tips

Have you ever broken a drill bit off in a hole? Sometimes you can grab it with pliers, but other times the steel piece is below the surface in the hole. If this happens, you can usually dissolve the steel in a solution of alum.

Alum is typically available from a food store or a drug store. Use about a teaspoon per cup of warm water. Submerge your piece so that the partially drilled hole is facing up so that bubbles can float free.

Soldering an earring post will always soften the wire a bit. Easiest way to harden it is to grip the end of the post with your flat-jaw pliers and twist it a couple half turns. This work-hardens the wire and at the same time tests your soldered joint.

More BenchTips by Brad Smith are at [groups.yahoo.com/group/BenchTips/](http://groups.yahoo.com/group/BenchTips/) or [facebook.com/BenchTips](https://www.facebook.com/BenchTips)

'In the first place, we should insist that if the immigrant who comes here in good faith becomes an American and assimilates himself to us, he shall be treated on an exact equality with everyone else, for it is an outrage to discriminate against any such man because of creed, or birthplace, or origin. But this is predicated upon the person's becoming in every facet an American, and nothing but an American...There can be no divided allegiance here. Any man who says he is an American, but something else also, isn't an American at all. We have room for but one flag, the American flag... We have room for but one language here, and that is the English language... and we have room for but one sole loyalty and that is a loyalty to the American people.'

*Theodore Roosevelt 1907*

## Great New Opportunities for Classes!

The Board recently decided to make a couple of exciting changes to the way classes are offered here at the club. Based partially on previous concerns about the location of the shop, and partially on a desire to help fellow artists in the community, we will no longer be holding beading classes through the club on a trail basis. We will continue to offer lapidary, silver smithing, glass fusing, and the like, at the shop, but we are going to be partnering up with local bead stores to offer you discounts and tons of different classes to choose from!

We are doing the trial period Beads on the Ave in Delray Beach. If the system works, we will be extending the offer to several other bead stores in the area. Here's the deal:

Book your class through Beads on the Ave, and make sure to tell them you are a Gem Society member!

The club receives a donation equal to about 1/3 the cost of the class (most classes are \$30).

Members receive a 15% discount in the store whenever they shop, and a 20% discount the day of the class.

Beads on the Ave is located at 151 NE 2nd Ave, Delray Beach, Florida 33463, Two blocks East of Swinton Ave, and a block and a half North of Atlantic Ave. Visit the store's website at [www.beadsontheave.com](http://www.beadsontheave.com) for the current class calendar, or call 561-278-6977 for more information. Feel free to call Jen Ursillo at 561-329-4343 with any questions you may have (please leave a message if you get the voicemail).

### Illinois Amber Has Scientist Stuck For Answer

By Henry Fountain - New York Times News Service

Scientists who study amber - fossilized resin that oozed from injured plants millions of years ago - divide the most common type into a couple of categories, based on chemical makeup.

Some consists of resin from gymnosperms or conifers, with the most famous being Baltic amber. Other amber, including that from the Dominican Republic, is made of resin from angiosperms or flowering plants.

But amber found in a coal seam in southern Illinois appears to confound categories. It has a chemical makeup similar to amber from angiosperms, but it dates from about 200 million years before the flowering plants evolved.

The amber, in droplets barely a quarter inch in diameter, was analyzed by researchers at Southern Illinois University and described in the journal *Science*. At 320 million years old, the Illinois amber is far older than other known types. The discovery demonstrates that plants evolved complex resin for use as protection against injury much earlier than thought, geochemist Ken B. Anderson said.

"And now that we know it's there we want to nail down when it evolved" he said "Ultimately, we want to know what kind of plants were producing it"

From San Diego Union Tribune Oct 2009 via The Pegmatite Nov. 2009

### Hints & Tips

via Pick & Pack, March 2009

#### Working soft stone

When working a soft stone such as onyx or marble, soak the stone in water for a couple of days before cutting. The absorbed water will keep the saw oil from being absorbed and will result in a higher polish.

from Gem-n-i

#### Large Slabs

A good way to tell how solid a slab might be is to heat it in hot water. The surface will dry immediately. If there are holes or fractures in the slab, every one will soon be lined with water. Mark the lines with a pencil to orient the slab for your project.

from T-Town Rockhound, March 2009

There was a club member named Hughes  
Who waited too long to pay dues,  
She was struck off the roster,  
Did not realize it cost 'er  
The workshop, club field trips and news.

<b>November 2010</b>						
Sunday	Monday	Tuesday	Wednesday	Thursday	Friday	Saturday
	<b>1</b>	<b>2</b> <div style="border: 1px solid black; padding: 5px; width: fit-content; margin: auto;"><b>Board Meeting</b>  <b>Shop 7:00 PM</b></div>	<b>3</b>	<b>4</b> <b>Micro Mounter Meeting</b> See Page 3	<b>5</b> Open Shop 6-9PM General Work  Jeff 561-706-9549	<b>6</b> Open Shop 9AM—NOON General Work  Jeff 561-706-9549
7	<b>8</b> Open Shop 7-9PM  Call first Michelle 561-969-3291	<b>9</b>	<b>10</b> Open beading 6—8 PM at Beads on the Ave. 151 NE 2nd Ave Delray Beach	<b>11</b>  Veterans Day	<b>12</b> Open Shop 6-9PM General Work  Jeff 561-706-9549	13
14	<b>15</b> <div style="border: 1px solid black; padding: 5px; width: fit-content; margin: auto;"><b>Show Committee Meeting</b> Shop 7:30 PM ALL WELCOME!</div>	<b>16</b>	<b>17</b> Open beading 6—8 PM at Beads on the Ave. 151 NE 2nd Ave Delray Beach	<b>18</b> <div style="border: 1px solid black; padding: 5px; width: fit-content; margin: auto;"><b>Membership Meeting @ Garden Club 7:30 PM Show Setup</b></div>	<b>19</b> <b>NO OPEN SHOP</b> Show Setup	<b>20</b> <b>NO OPEN SHOP</b>  Show
21	<b>22</b> Open Shop 7-9PM  Call first Michelle 561-969-3291	<b>23</b>	<b>24</b>	<b>25</b>  Thanksgiving Day	<b>26</b> <b>NO OPEN SHOP</b>	<b>27</b> <b>NO OPEN SHOP</b>
28	<b>29</b> Open Shop 7-9PM  Call first Michelle 561-969-3291	<b>30</b>				

### UPCOMING SHOWS

The Suncoast Gem and Mineral Society of St. Petersburg, Florida is sponsoring the Sale of the Century in **November 12-14, 2010**. This is a sale of the 40 year collection of a late member. It has to be seen to be believed. Please distribute the attached flyer to your members. If you have any questions please contact Sue Hazelden (e-mail: sujagems1@aol.com; telephone: (727) 321-5732.

### intelligent / intellectual

While an intelligent person is merely one who is not stupid or slow-witted, an intellectual person is one in whom the part played by the mind, as distinguished from the emotions is greater than in the average man. An intellectual is frequently considered a highbrow or egghead; a person of superior intellectual attainments or interests.

## December 2010

Sunday	Monday	Tuesday	Wednesday	Thursday	Friday	Saturday
			1	2  <b>Micro Mounter Meeting</b> See Page 3	3  Open Shop 6-9PM General Work  Jeff 561-706-9549	4  Open Shop 9AM—NOON General Work  Jeff 561-706-9549
5	6  Open Shop 7-9PM  Call first Michelle 561-969-3291	7	8  Open beading 6—8 PM at Beads on the Ave. 151 NE 2nd Ave Delray Beach	9  <div style="border: 1px solid black; padding: 5px; display: inline-block;"><b>Membership Meeting @ Garden Club 7:30 PM</b></div>	10  Open Shop 6-9PM General Work  Jeff 561-706-9549	11  Holiday Party  See Page 3 for info...
12	13	14	15  Open beading 6—8 PM at Beads on the Ave. 151 NE 2nd Ave Delray Beach	16	17  Open Shop 6-9PM General Work  Jeff 561-706-9549	18  Open Shop 9AM—NOON General Work  Jeff 561-706-9549
19	20	21	22  Open beading 6—8 PM at Beads on the Ave. 151 NE 2nd Ave Delray Beach	23	24  <b>NO OPEN SHOP</b>	25  Christmas Day
26	27  Open Shop 7-9PM  Call first Michelle 561-969-3291	28	29  Open beading 6—8 PM at Beads on the Ave. 151 NE 2nd Ave Delray Beach	30	31  <b>NO OPEN SHOP</b>	

**Please note on your shop waiver form that you have received and read the shop rules.  
New liability forms need to be signed in 2 places for anyone using the shop.**

\$5 shop use fee is NOT charged when attending a class. Whether attending a class or using the shop, you must sign a Liability Waiver (New waiver must be signed after the first of every year). **and** sign the Shop's Log book on each visit. Jump ringer certification is available on Monday or Friday nights.

Jump Ringer blades are available at the shop.

## Classes

Members interested in classes should check the Class Folder at the monthly meetings, or contact the teacher directly to schedule a class. The teachers will then be responsible for contacting the Head Shop Steward to make sure the shop is available. The class coordinator will be a central information point between teachers and the Society and will still report on classes at the meetings.

CLASS	INSTRUCTOR	COST	DATE	TIME
Art Clay Silver	Michelle Renné 561-969-3291	\$50 + \$85 materials (depending on cost of silver)	Saturday, TBD	10-4PM at the Shop
Cabochon Six 3-hr sessions	Ed Flashenburg 561-733-1466	\$60	Off for the Summer	6-9PM at the Shop
Chain Making (Beg) – Box Chain	Kelly Azor 561-688-7903	\$30 + \$25 materials	Saturday, Date TBD	1-4PM at the Shop
Chain Making (Beg) – Byzantine Chain	Kelly Azor 561-688-7903	\$30 + \$25 materials	Saturday, date TBD	1-4PM at the Shop
Chain Making (Beg) – Japanese Exploration	Jen Ursillo 561-329-4343	\$30 + \$25 materials	Tuesday, date TBD	7-9:30PM at the Shop
Chain Making (Adv) – Snake Chain	Jen Ursillo 561-329-4343	\$30 + \$25 materials	Saturday, date TBD	1-4PM at the Shop
Chain Making (Adv) – Turkish Round	Jen Ursillo 561-329-4343	\$30 + \$25 materials	Saturday, date TBD	1-4PM at the Shop
Enameling on Copper Two 3-hr sessions	Hazel Levin 561-439-6915	\$40 + \$15 materials	2 Tuesdays	1-4PM at the Shop
Enameling on Copper Two 3-hr sessions	Hazel Levin 561-439-6915	\$40 + \$15 materials	2 Saturdays	1-4PM at the Shop
Flat Lap	Ed Flashenburg 561-733-1466	\$40 + \$10 Supplies	Wednesday	9 AM—Noon at the shop
Fused Glass (Beginner/Tuesday)	Ed Flashenburg/John Holmstrom 561-733-1466	\$40 + \$15 materials Or \$5.00 open shop fee	Off for The Summer	9:30—Noon at the Shop
Fused Glass (Beginner/Saturday)	Michelle Renné 561-969-3291	\$40 + \$15 materials	Saturday, date TBD	12-4 PM at the Shop
Fused Glass (Advanced)	Michelle Renné 561-969-3291	\$40 + \$15 materials	Saturday, date TBD	12-4 PM at the Shop
Non-solder Wire Work	Michelle Renné 561-969-3291	\$40 + \$15 materials	TBD	12-4PM at the Shop
Kumihimo (Japanese Weaving)	Kelly Azor 561-688-7903	\$20 + \$15 kit	TBD	9-12 or 1-4PM at the shop
Right Angle Weave Cubes	Jen Ursillo 561-329-4343	\$40 + \$50 for optional kit <u>OR</u> supply list can be provided	Saturday, date TBD	1-4 PM at the Shop
Silversmithing (Intro) & Torch Glass beads (Intro) Coming in February	Jack Samper 561-964-4710	TBD	Starting in February	TBD

**MEMBERSHIP DUES**

Junior Membership - \$10.00  
 (Under Age 18)  
 Single Membership - \$15.00  
 (Over Age 18)  
 Family Membership - \$25.00  
 (Includes 2 adults and Children Under  
 Age 18 in a single household)

Membership expires on December 31st  
 each year and is due by the end of Febru-  
 ary of the new year. To renew your  
 membership, make your check or money  
 order out to:

Gem & Mineral Society of the Palm  
 Beaches, Inc. and mail to:

Membership Secretary  
 Gem & Mineral Society  
 P.O. Box 18095  
 West Palm Beach, FL 33416

**NAME TAGS**

Available from:  
 Ace Marking Devices (\$12.00)  
 3308 S. Dixie Hwy.  
 West Palm Beach, FL 33405  
 561—833-4073

Open Shop schedule is  
**TENTATIVE** due to changing  
 class schedule.

**Contact the shop steward listed  
 below before you go!**

Shop fee is \$5 per visit, payable  
 to the Shop Steward.

**SHOP STEWARDS:**

**Head Steward**

John Holmstrom 561-585-7094

**Monday PM**

Michelle Renné 561-969-3291

**Friday PM**

Jeff Ursillo 561-706-9549

**SHOP PHONE 561-585-2080**

**2010 OFFICERS**

President*	Michelle Renné	969-3291
1st Vice President*	Jen Ursillo	329-4343
2nd Vice President*	Samantha Lazzaro	764-6556
Secretary*	Nina Murray	596-3390
Treasurer*	Marv Berkowitz	364-9696

**2010 DIRECTORS**

Past President*	Barbara Ringhiser	588-5458
Past President*	Jeff Ursillo	706-9549
Show Chairman*	Barbara Ringhiser	588-5458
Show Dealer Chairman	Ellen Jean	931-372-8236

**COMMITTEE CHAIRPEOPLE**

Class Coordinator	OPEN	
Field Trips	Michelle Renné	969-3291
Historian	OPEN	
Hostess	Coralie Norvell	965-4748
Librarian	Nina Murray	596-3390
Membership*	Aurora Siegl	988-7006
Newsletter Editor*	Jeff Ursillo	706-9549
Photographers	Lo Rain/Aurora Siegl	
Programs	Samantha Lazzaro	764-6556
Raffle Coordinator	Harriet Flashenburg	733-1466
Refreshments	Debbie Anderson	965-9279
Sunshine Committee	Lo Rain	827-5793
Social Events	OPEN	
Head Shop Steward	John Holmstrom	585-7094
Website Manager	Jeff Ursillo	706-9549

\* Denotes a Voting Board Member

All phone numbers are 561 area code, unless noted otherwise.

The Gem & Mineral Society of the Palm Beaches, Inc. is a member of the Eastern and Southeastern Federation of Mineral and Lapidary Societies, and is affiliated with the American Federation of Mineralogical Societies. Monthly meetings are held on the third Thursday of the month except for December which is held on the second Thurs- day. Meetings start at 7:30 PM at the West Palm Beach Garden Club, 4800 Dreher Trail North, West Palm Beach, FL 33405-3018 (across from the South Florida Science Museum in Dreher Park, West Palm Beach)

**Gem and Mineral Society of the Palm Beaches, Inc. Website**  
**www.gemandmineral.cc**

**VOLUNTEER TIME FOR THE ANNUAL SHOW!!!**

November 20th, the start of our annual show, will be here before we know it!! That means it is time to start thinking about volunteering NOW. Here's a list of volunteer positions and the duties required.

REMEMBER-if you work for at least 4 hours, you get a free ticket to the Christmas banquet!!!

YOU can make a difference! Without you, our society members, it would be impossible to fill the many time periods necessary to make the 2010 show the best show yet! Over 100 volunteer shifts need to be filled.

*Please let us count on you.*

**THURSDAY Set-up crew · NOVEMBER 18TH**

Approximately 6 people are needed to move tables around and set up each booth area. We will be supervising Fairgrounds help in the placement of tables according to our floor plan. This position requires about 5 hours of mostly directing people who are moving tables around. Also, this year we will be able to do the Society's set-up on Thursday. We have hired help to do the heavy lifting, but we still need members to assist in directing helpers on where unloaded materials go at the fairgrounds. Materials such as our display cases, from the storage unit, must be loaded in the rented truck, and brought to the Fairgrounds, unloaded and set-up. We will also be setting up the flume.

**FRIDAY SET/UP/SUNDAY TAKE DOWN - NOVEMBER 19th AND 21st**

As many volunteers as we can get are needed during the day on Friday and from 5:00 PM on Sunday. Friday, the display cases need to be assembled, as well as many odds and ends jobs too numerous to go into here. On Sunday, after the show is over, every-thing must be packed up, loaded in the truck, and delivered back to the storage area. Again, we have hired help to do the heavy lifting, but we still need members to assist in directing helpers on where materials go to be loaded into the truck. We also will need some people to go to the storage location to direct the hired help on where to put the unloaded materials

**TICKET TAKERS · NOVEMBER 20th AND 21st**

Two people are needed for each 2-hour time slot. Responsibilities include taking tickets at the entrance doors, tearing the ticket in half, depositing one half in the box, and giving the second half to the guest. This position requires either sitting on a stool or standing. Requirements include a pleasant, friendly, helpful, courteous, and kind person-ality. At times, ticket takers are very busy. This is a very important position because ticket takers are the "first im-pression" that people get of our society.

**INFORMATION TABLE · NOVEMBER 20th AND 21st**

Two people are necessary for each 2-hour time slot. Responsibilities include answering questions concerning the show and providing information about our society's activities. Information attendants should be able to direct visi-tors and provide information about everything from who is in charge, to where a particular dealer is located. This position requires sitting at the information desk. The ability to be pleasant and helpful, without getting flustered, is important. Club history books are located at this table as well.

**SCHOLARSHIP FUND RAFFLE - NOVEMBER 20th AND 21st**

Two people per 2-hour time slot are needed. Responsibilities include encouraging people to purchase tickets for the raffle of the many items available. It is extremely important to be friendly, inviting, cheerful, and encouraging without being insistent. This position requires some standing. The main objective is to point out the items that may be won with only a \$1.00 ticket.

**SHOW SECURITY - NOVEMBER 20th AND 21st**

Two to four people are needed for each 2-hour time slot. Responsibilities are to observe people, watch for those acting in a disorderly manner (for example, drunk, smoking, or shoplifting), and report it to Show Chairman, Committee Chairperson, Fairground Security, or Armed Security. Show Security guards should NEVER confront or accuse anyone, ONLY report it. Greeting the public in a friendly manner is also important. This position requires walking around or standing.

**DEMONSTRATIONS- NOVEMBER 20th AND 21st**

People are needed to demonstrate their skills during each 2-hour time slot. The area is large enough for several demonstrators to present simultaneously. This is the opportunity to greet the public and show-off by participating in beading, stained glass, wire wrapping, chain making, or any other lapidary skills. If you are interested in volunteering to demonstrate at the show, please contact demonstration coordinator Kelly Azor-Anderson at 561-688-7903 or 561-635-7619

**LUNCH ON SET-UP DAY - NOVEMBER 19TH**

Lunch will be served to the dealers, society members, and fairground workers on Friday, set-up day. We need someone who will shop for the supplies (we have a list - sandwich makings, drinks, salad, plates, utensils, donuts, coffee, etc.) Everyone makes their own sandwiches. You would be advanced funds for shopping. Serving is buffet style. We need a couple of volunteers there to oversee the buffet between 9am and 5pm - 2 hour shifts.

**MINING / FOSSILS/ GEODE CUTTING - NOVEMBER 20th AND 21st**

Nine people for each 2-hour time slot are necessary to run the mining area effectively. Duties include keeping buckets filled, collecting money, and keeping lines moving. For the fossil dig and gemstone mining, volunteers will be briefed on what fossils and gemstones are available in the dig and mine. There will be cards available with fossil samples and rough gemstone samples to aid in identification if participants request the information.

Name: \_\_\_\_\_ Phone: \_\_\_\_\_

Best Time to Call: \_\_\_\_\_ Email: \_\_\_\_\_

Position(s) Interested in: \_\_\_\_\_

(use additional of the sheet if you need more space.)

Please circle times you are available (2 hour shifts)

Thursday (Nov. 19) Set Up	9AM	11AM	1PM	3PM	
Friday (Nov. 20) Set Up/Lunch	9AM	11AM	1PM	3PM	
Saturday (Nov. 21)	9AM	11AM	1PM	3PM	5PM
Sunday (Nov. 22)	10AM	11AM	1PM	3PM	5PM Take Down

Please give the attached form to Barbara Ringhiser or Jeff Ursillo at the October or November meeting, call or email Barbara (561) 588-5458 (bar5678@aol.com) or Jeff (561) 706-9549 (bnmjjeff@aol.com) or

Mail the form to: Volunteers GMSPB  
P.O. Box 18095  
West Palm Beach, FL 33416-8095