



The next General Membership Meeting will be held on

THURSDAY, MARCH 16, 2005

**7:30 PM at the West Palm Beach Garden Club
(Dreher Park, across from the Science Museum)**

Program following the General Meeting

Mr. Alex Solimine

The Stone Age Culture of the Paleo-Indians

Join us for this exciting talk about early man in Florida. Learn about these ancient cultures that lived in Florida and hunted animals such as Mammoths and Mastodons.

In addition Chris Koch will be bringing in some real artifacts found in the Suwanee River in Florida. Examples of pottery, partial projectile points and bone pins will be available for purchase. In addition Chris is donating a group of artifacts for the auction.

The Rockhound
Volume 40, Issue 7
March 2006

Upcoming Programs

Greetings society members. I do hope you were in attendance at our February meeting where Mr. and Mrs. Grimes presented a very informative program on setting up exhibits along with many helpful guidelines on competitive exhibiting. Our upcoming meeting will feature a program presented by society member Mr. Alex Solimine on the Stone Age Culture of the Paleo-Indians and will be highlighted by many interesting artifacts, some of which can be purchased. In addition, a staff person from the South Florida Science Museum, will present a program on meteorites at our April 20 monthly meeting. With these interesting and informative programs upcoming, we hope to see all of you in attendance.

Lee Krenz

What's Inside

Door Prizes & Raffle Items
See Page 2 for more details.

Upcoming Shows

See Page 4 for more details.

Gemstone Notes

By Lee Krenz
See Page 5 for more details.

Dichroic Glass

by Marv Berkowitz
See Page 6 for more details

DIRECTIONS TO THE SHOP

See Page 7 for more details.

Door Prizes and Raffle Items

Please remember, every person that arrives by 7:30 will receive a FREE door prize ticket. Last Month the auction items brought in \$37! The Orthoceras fossil last month and the Paleo-Indian artifacts this month were donated by Chris Koch. If anyone has any items they would like to donate for door prizes or auction items please give them to Barbara.

This month the door prizes will be: a bracelet made with tiny beads woven in a pattern and a bag of carved and cabbed stones. The raffle prizes will be: a necklace with beaded butterfly, a piece of apophyllite and stilbite from Mahad and a selection of Authentic Florida Paleo-Indian artifacts that include broken pieces of pottery, a stone tool and bone pin. Don't miss out on these items as they all will go by the end of the night!



PRESIDENT'S MESSAGE

"Never put off till tomorrow what you can do today."

~ Thomas Jefferson



There is a lot of great news with regards to the club this month! The shop is ready for use and classes can now start.

However, as many of you have noticed, this newsletter is very late. Multiple factors that revolved around my work and A/C problems at my house kept me from working on the Newsletter as I planned. In addition, after waiting over two months for my car to get repaired, there are still problems with it. The result was a late newsletter.

It also appears that Mary will not be able to take over the newsletter completely as I once hoped. For this reason if there is anyone that wants or needs to submit something for the

newsletter, I will need it no later than the Saturday after the Board Meeting. Board Meetings are held on the First Wednesday of the month. If something can be submitted earlier, it would be greatly appreciated as I will actually start formatting the Newsletter for Next Month tomorrow. If I have everything but a few items by the first of each month, it could even get out early.

Thank you for those that have asked to help out, but what I really need is everything early. If the only thing I had to write was the president's message it would make me very happy!

Sorry again for the delay. See you next month.

Best Regards, Chris Koch

CLUB PURPOSE

To associate persons of the Palm Beach area of Florida who are interested in earth sciences, to work together as an organization in the gathering, cutting, displaying and studying of rocks, shells, artifacts and any kind of scientific objects of interest to the individual and the organization to promote community interest in these objects.

Copyright 2006
by the

Gem & Mineral Society
of the Palm Beaches, Inc.

Permission to reprint original material herein not otherwise copyrighted is granted provided credit is given to both author and publication.

Articles not bylined are by the Editor

Newsletter
Editor

Chris Koch

General Meeting Minutes

February 16, 2005

The meeting was called to order at 7:38 followed by the Pledge of Allegiance.

There were 5 guests present.

Treasurers Report - read and motion made and passed.

Minutes – motion made to accept as printed in the newsletter and passed.

Membership – Ingrid not present but Michelle accepted new membership applications and dues. Anyone who has not paid by tonight will NOT be in the roster.

Field trips – 2 day dig at Rucks Pit March 10 & 11. Three other clubs joining us. \$20 a person.

Shop- KC Foster, Frank Hecker and John Holmstrom have been working diligently on finalizing the “little” things that make a difference! We will have a GRAND OPENING in March !

Classes – Michelle has taken over for Suzie. She had sign up sheets out and a list of upcoming classes. Anyone interested in learning or teaching please contact Michelle

Show – Carl is working on EVERYTHING ! The committees are starting to fill up. Still need a couple of Chairman. A meeting is held the Tuesday after the general meeting at Don Ramon’s in Lake Worth. Anyone is welcome and encouraged to attend.

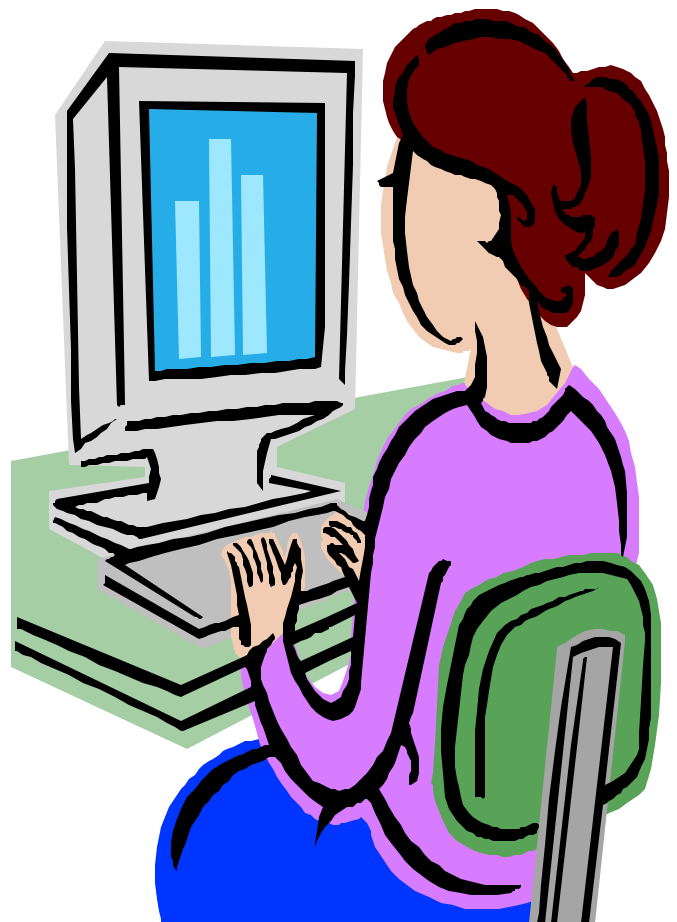
Ist Vice President - we still need someone to fill this position. Anyone interested please write a brief note stating your history with the club and qualifications (?). See any Board

member for more info (it’s an easy job!)

Raffle – the raffle was started tonight. A special “early bird ticket” was given to any member who arrived before 7:30 pm. Tickets are \$1 each or 6/\$5. The items available will be published in the newsletter the month before so you’ll know what to expect! Donations and/or donated items are appreciated.

Program – tonight’s will be on exhibits and and to display for judging presented by members Bill and Joanne Grimes.

Meeting adjourned at 8:41 for refreshments.



Fossil shows..by Michelle Renee

MORE SHOWS

VENICE SHARK TOOTH FESTIVAL

Friday - April 8, 2005, 4 p.m.-9 p.m.

Saturday - April 9, 2005, 10 a.m.-9 p.m.,

Sunday - April 10, 2005 10 a.m.-5 p.m.

The Shark Tooth Festival takes place each Spring against the back drop of Venice's best shark tooth hunting beach. It's a weekend of food, fossils, arts & crafts, music and fun for the whole family. (<http://www.venice-fla.com/index.htm>)

Directions from I-75: Take I-75 to Exit 193 (old 35), Jacaranda Blvd. (from the South, make a left off the exit; from the North make a right off the exit.) Take a right on to Venice Ave. Continue straight, crossing over the Venice Ave. bridge and through the Venice retail business section, to Harbor Drive. Turn left (South) on Harbor Drive and continue until you reach the festival.

UPCOMING SHOWS

MARCH/APRIL	APRIL	APRIL
March 31st - April 2nd Bradenton, Florida Frank Cox Productions Gem, Jewelry and Bead Show Brandon Auditorium 100 10th Street West 10:00 AM - 5:00 PM Daily Frank Cox, 941-954-0202 www.frankcoxproductions.com	April 7th - 9th Ocala, Florida Ocala Jewelry, Bead & Mineral Show Ocala Community Center 828 NE 8th Ave. 7th & 8th - 10 to 6 9th - 10 to 5 Hal Parsons - 813-754-0858 jewelrybyelmar@aol.com	April 22nd - 23rd West Palm Beach, Florida Frank Cox Productions Gem, Jewelry and Bead Show South Florida Fairgrounds 9067 Southern Blvd. 10:00 AM - 5:00 PM Daily Frank Cox, 941-954-0202 www.frankcoxproductions.com

Show News

Florida, Blows Us Away!!!



Yes folks, that is the theme for the next show.

It gives us the opportunity to promote the unique aspects of our home state and educate our SE Federation guests about our fossils and calcite deposits.

Due to the added workload for hosting the SE Federation, the show committee has decided to cancel the show classes for this year. We will be expanding the demonstration and display areas and promoting more interactive hands on events.

Next meeting will be Monday, March 20th @ Don Ramon's Restaurant on Dixie Hwy. Come join the fun!

Gemstone Notes

The spinel Family

By Lee Krenz



Although not as popular or well known as corundum (ruby, sapphire) or beryl (emerald et. al.), spinel is a durable (8 on Mohs Scale) and appealing gem which comes in a variety of colors and is frequently found with a high degree of clarity and brilliance. For many centuries some red spinel was mistaken for ruby, hence the story surrounding the large uncut Black Prince's Ruby in the English crown jewels. Other common colors of spinel are pink, orange, blue, violet, and purple. Somewhat rarer are color-change (grayish blue to purplish) and star spinels. The main sources of the gem are Mynamar (Burma) and Sri Lanka but it is also found in several other locations around the globe. Interestingly, this beautiful gem is often a by-product of the search for ruby and sapphire. Some examples of spinel will be available for your viewing pleasure during our March meeting.

Classes to be scheduled

Michelle Renne' will have a list of available classes at the meeting. Any teachers need to get with Michelle regarding scheduling them. If you

are interested in teaching a class or have an idea of another one, please let Michelle know. Her phone number is 561/969-3291.



SHOP NEWS

Its up and running and ready to use ! Members Frank Hecker, John Holmstrom and KC Foster have spent many hours getting it ready for us. I'm sure I share everyone's appreciation for their time. We also need some dedicated shop stewards. If you are interested please see or call Michelle at 561/969-3291.

Dichroic Glass by Marv Berkowitz

MEMBER ARTICLE

I have been teaching “Hot Glass” for over a dozen years. All of a sudden, everything is now dichroic glass. Some while ago I posted a notice for a class to make Dichroic pendants and about a 100 people sign up. What is dichroic glass anyway? If you look at the word: di means two & chroic refers to color. If you look at a piece of dichroic from one direction it appears to be one color. If you change the angle by 90 to 45 degrees, the color changes. How do they do that and why is it so expensive? Basically they deposit a thin film of a metal on the surface of the glass by a process called sputtering and then fire it into the glass. By varying the metal and its composition, it changes the reflected color. By putting a filter between the sputtered metal and the glass and maybe even moving one with respect to the other, while performing this operation, you can create different patterns. Since this is really a very thin film, it is actually done molecule by molecule. If one were to do this under normal atmospheric conditions the metal molecules would collide with the air molecules and distort the pattern. This complicates the procedure, because now this means that it has to be carried out in a vacuum. By doing this process multiple times, with different metals you can achieve different effects. By etching patterns into the metal or using patterned surface glass or different colored substrates, the results are only limited by the manufacturer’s creativity.

I know that this all sounds like space age science, but we all know that “there is nothing new under the sun”. I was doing this 50 years ago (you knew that I was an old codger). At that time, all electronics revolved around something called a vacuum tube. Since that depended upon firing electrons from one side of the device to the other, you couldn’t have any air molecules in the way. We would first suck all of the air out of the device that we could, seal it, then to “get” any remaining air we would sputter a thin film of “an air seeking metal” (usually Barium) onto the inside of the glass envelop. All of this was done from the outside of the sealed glass envelop. What a trick that was!

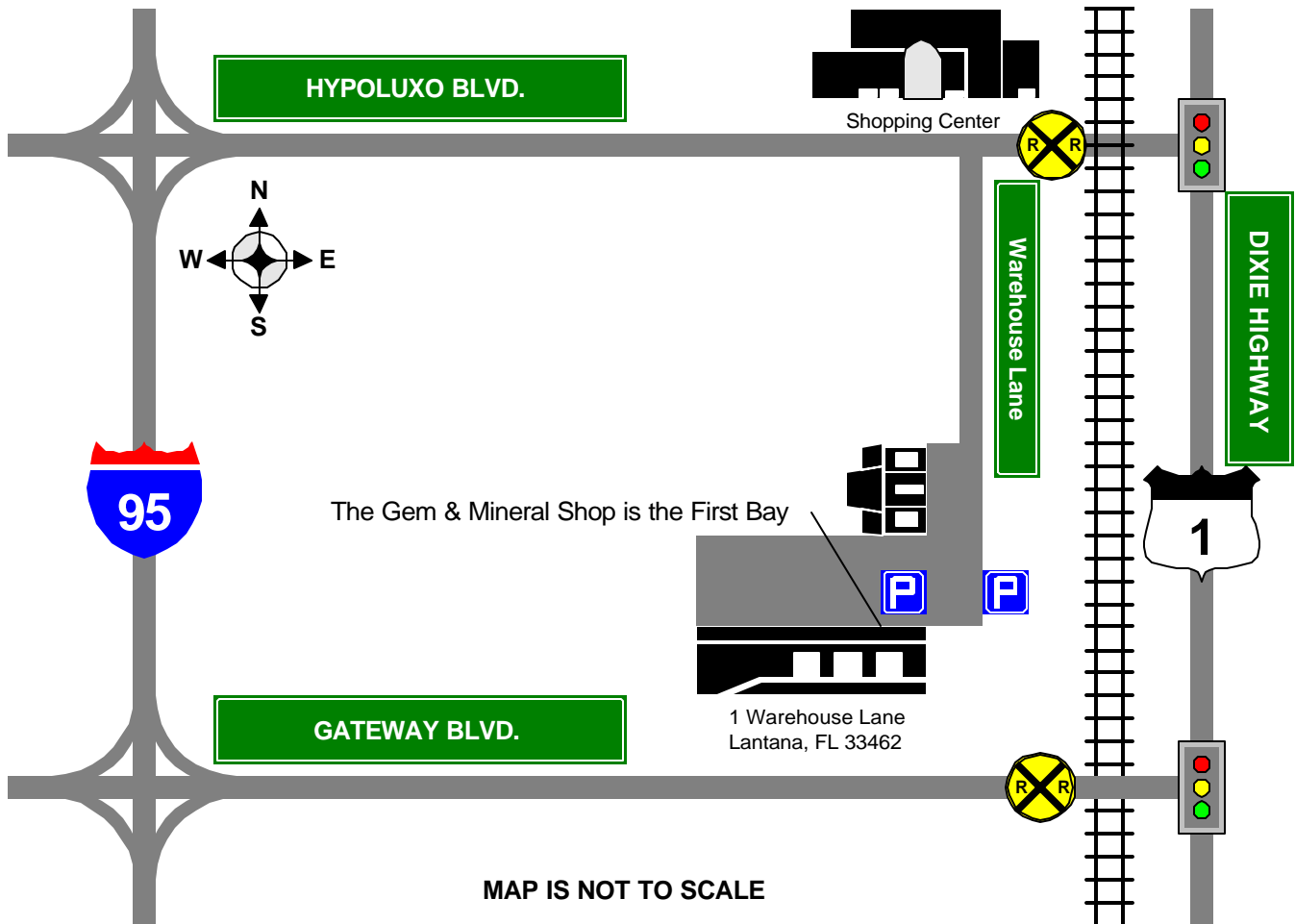
You can find dichroic glass used in pendants, paper weights, fused items and whatever the artist’s mind can create. There are only two cautions to keep in mind. One: don’t fire over the temperature at which the metal was fused (1600 degrees F. is usually O.K.) and two: be sure that the coefficient of linear expansion of all glass is about the same (most dichroic is about 90 x ten to the minus six). So take a class or experiment on your own and have fun!

1st Vice President Found

Bob Durney has asked to be considered for the position of 1st Vice President. We are making this known in this newsletter and will be discussing it at the April Board Meeting. Look for more information regarding this in next

month’s newsletter. Also as a reminder, if you are willing to help in any other areas, please see a board member at a general meeting. There are still several committee positions that need to be filled.

DIRECTIONS TO THE SHOP



Shop Grand Opening!!!

Sunday, March 19 from 10-2 pm. (see map for directions or call Michelle at 561/969-3291). Some of the machines we have duplicates of will be up

for silent auction from 10-12 and can go home with the winner THAT DAY! We need more room to work .

MEMBERSHIP DUES

- Junior Membership - \$10.00
(Under Age 18)
- Single Membership - \$15.00
(Over Age 18)
- Family Membership - \$25.00
(Includes Children Under Age 18)

Membership expires on December 31st each year. To renew your membership, make your check or money order out to:

Gem & Mineral Society of the Palm Beaches and mail to:

Membership Secretary
Gem & Mineral Society
P.O. Box 18095
West Palm Beach, FL 33416

NAME TAGS

Name tags are available from the Membership Secretary. The cost per name tag is \$6.00.

IF YOU HAVE A NAME TAG, PLEASE WEAR IT. IF NOT, PLEASE ORDER YOURS TODAY!

CLUB VESTS

Club vests can be ordered from Wearguard at 1-800-388-3300.

Order the following:

Color: BL Blue
Unisex sizes: XS,S,M,L,XL,XXL
Style: 348
Price: \$19.99 (plus \$6.50 S&H)

These vests are plain blue vests.

You will need to purchase a Society patch at a General Membership Meeting

OFFICERS AND DIRECTORS FOR 2006

OFFICERS

President*	Chris Koch	642-0809
1st Vice President*	OPEN	
2nd Vice President*	Lee Krenz	744-5196
Secretary*	Michelle Renee`	969-3291
Treasurer*	Barbara Ringhiser	588-5458

DIRECTORS

Past President*	Jack Stamper	964-4710
Past President*	Harold Shonkwiler	586-2026
Show Chairman*	Carl Bengtson	641-4493

COMMITTEE CHAIRPEOPLE

Class Coordinator	Michelle Renee`	969-3291
Club Patches & Pins	Lucette Chicoine	967-9938
Field Trips	Michelle Renee`	969-3291
Historians	Bill & Florallee Stein	684-0950
Hostess	Coralie Norvell	965-4748
Junior Program	OPEN	
Librarian	OPEN	
Media (video & photos)	Harold Shonkwiler	586-2026
Membership*	Ingrid Webster	793-8646
Newsletter Editor*	Chris Koch	714-6222
Programs	Lee Krenz	744-5196
Refreshments	Debbie Anderson	965-9279
Special Projects Raffle	Junior Members	
Sunshine Committee	Terry Koplín	848-5885
Social Events	OPEN	
Shop Stewards	OPEN	
Website Manager	Terry Koplín	848-5885

* Denotes a Voting Board Member

The Gem & Mineral Society of the Palm Beaches, Inc. is a member of the Eastern and Southern Federations of Mineral and Lapidary Societies, and is affiliated with the American Federation of Mineralogical and Lapidary Societies. Monthly meetings are held on the third Thursday of the month excepting December which is held on the second Thursday. Meetings start at 7:30 PM at the West Palm Beach Garden Club across from the South Florida Science Museum in Dreher Park, West Palm Beach.