



The next General Membership Meeting will be held on

THURSDAY, FEBRUARY 16, 2005

**7:30 PM at the West Palm Beach Garden Club
(Dreher Park, across from the Science Museum)**

Program following the General Meeting

Bill and JoAnne Grimes

Competative Exhibiting

Bill and JoAnne Grimes are lifetime members of our society. Bill Grimes is a past president of the Gem and Mineral Society of the Palm Beaches (GMSPB), has served in the past as exhibits chairman for the GMSPB, and Houston Gem and Mineral Society, for several years in the 1970's as Set up chairman for the GMSPB. Bill has exhibited competitively since he was a junior member of the Tampa Bay Gem And Mineral Society and as the EFMLS Chairman for the Mineral Exchange committee .

See a reprint of Bill's article from last October on page 6.

The Rockhound
Volume 40, Issue 6
February 2006

Upcoming Programs

Greetings fellow society members. I do hope that you were in attendance at our January 19 meeting when Mr. Mielke presented an informative and interesting program on garnets, a complex family of gemstones. We hope to have Mr.Mielke back in a few months to speak about Florida gems, Florida agatized coral and calcite. Our program for February will be presented by society members Joanne and Bill Grimes and will deal with setting up exhibits and competitive exhibits. Our program for March will be presented by society member Alex Solimine and will deal with the Stone Age culture of the Paleo_Indians and will feature numerous artifacts some of which will be available for sale. Again I welcome your feedback. You can e-mail me at lrkjupiter@aol.com or call me at 744-5196 in Jupiter.

Lee Krenz

What's Inside

Door Prizes & Raffle Items
See Page 2 for more details.

Upcoming Shows

See Page 4 for more details.

Fossil shows...
by Michelle Renee'
See Page 4 for more details.

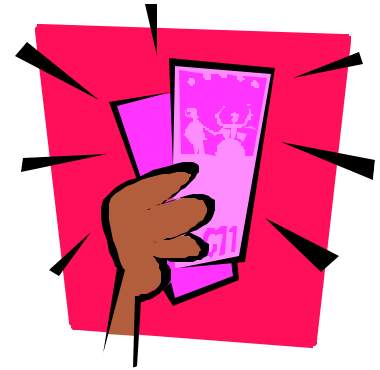
Gemstone Notes

By Lee Krenz
See Page 5 for more details.

COMPETATIVE EXHIBITING
BY WILLIAM GRIMES
See Page 6 for more details.

Door Prizes and Raffle Items

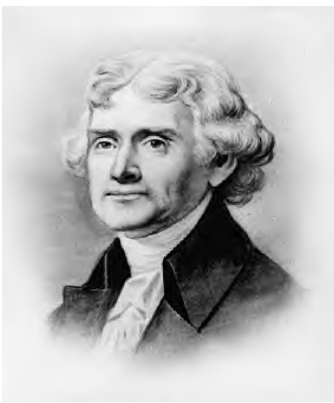
Starting this month we will be having monthly raffle prizes! Every person that arrives by 7:30 will receive a FREE door prize ticket. This should give people an incentive to arrive on time. In addition, there will be several raffle items in which we will be selling tickets. Profits from ticket sales will go towards the purchase of a projector that can be used for presentations by speakers. This month the door prizes will be: a necklace with piece of glass and a rose petal pendant that has been dipped in resin. The raffle prizes will be: a heart-shaped enameled earrings with roses, a Piece of Stilbite from Jalgaon and an Orthoceras fossil from Morocco. Don't miss out on these items as once they all will go by the end of the night!



PRESIDENT'S MESSAGE

"Never put off till tomorrow what you can do today."

~ Thomas Jefferson



This year continues to bring changes to my life. My car is still getting repaired and I now realize how much we depend on vehicles. In addition, the Museum has kept me very busy with several new programs that we are working on. Two of them will be a collaborative effort between Scripps Florida and the Museum's educational staff. Another is a grant that will bring several of our new programs that include a Meteorite Lab, Mineral ID and several other to students in Broward County. This year the Museum's program should reach over 60,000 students throughout South Florida. Needless to say I have been very busy.

There are a lot of good things happening in the club as well. The

shop is ready for classes and we plan on having a Grand opening on Sunday March 19th. All Members will receive a special invitation with Directions as we get closer.

Also new this month are door prizes and raffle items. Hopefully the door prizes will be an incentive for people to arrive on time as the tickets will only be given to Members and guests that arrive before 7:30. In addition, the meetings will begin promptly at 7:30 so please make your way to a seat a few minutes before so the meeting can begin on time. I am hoping this will make the meeting go quicker so our speaker is not rushed for time.

Best Regards, Chris Koch

CLUB PURPOSE

To associate persons of the Palm Beach area of Florida who are interested in earth sciences, to work together as an organization in the gathering, cutting, displaying and studying of rocks, shells, artifacts and any kind of scientific objects of interest to the individual and the organization to promote community interest in these objects.

Copyright 2006
by the

Gem & Mineral Society
of the Palm Beaches, Inc.

Permission to reprint original material herein not otherwise copyrighted is granted provided credit is given to both author and publication.

Articles not bylined are by the Editor

Newsletter
Editor

Chris Koch

General Meeting Minutes

January 19, 2005

The meeting was called to order at 7:32 by Chris Koch followed by the Pledge of Allegiance. The minutes were approved as printed in the newsletter. We had 3 guests present and they all joined the club!

Ist Vice President : we still need someone to fill this position. Anyone interested please write a brief note stating your history with the club and qualifications (?). See any Board member for more info (it's an easy job!)

Treasurer's report - was read by Barbara Ringhiser and approved.

Membership – dues are due! Those that are paid up by February will be in the new roster which will ready in March.

Shop: Thanks to a lot of help from Frank Hecker and John Holmstead. They hooked up all of the cabbng machines after they put them back in their proper places! The place still needs to be cleaned up a bit and a few other "tweekings" to make it ready for the GRAND OPENING! We need a "Shop Steward" or 2 to keep an eye on the machines for repairs, etc. Anyone interested please see Chris Koch.

Show: Next meeting will be Tues, Jan. 24 at Don Ramon's on Dixie Hwy. south of Forest Hill Blvd. at 7 pm. We need more Chairpeople for different committees. We have : KC Foster – exhibits, Mary Barrenchea – graphics coordinator, signs, banners, etc. , Michelle Renne' – classes, Bob Durney – mining/flume.

We need: Friday lunch set-up, program handouts, write-ups for neighborhood newsletters, silent auction, ticket takers, demo table, information table. A complete list will be available at the next general meeting. We need ideas of what kinds of classes should be held at the show. Any teachers interested please see Michelle.

Storage unit: we need a MAJOR re-organization of the place! Heavy duty shelving will help a lot ! We would like to do this by March. Anyone interested

please contact Chris Koch.

Refreshments: We need a "back-up" for refreshments. Anyone interested please see Debbie Anderson or Chris Koch.

Raffle: We will begin the meeting raffle again in February. A special "early bird ticket" will be given to any member who arrives before 7:30 pm. Tickets will be \$1 each or 6/\$5. The items available will be published in the newsletter the month before so you'll know what to expect! Donations and/or donated items are appreciated.

New Member: Mila, who is a jeweler who teaches at the Armory. She will try to get more information on classes and working with them.

Programs: tonight's program will be given by Sandy Milke on garnets. February's program will be on competitive exhibit layout by the Grimes.

The meeting was adjourned at 8:24 for refreshments followed by the program.



Fossil shows..by Michelle Renee

MORE SHOWS

TAMPA BAY FOSSIL CLUB ANNUAL FOSSIL FEST

March 11th and 12th, 2006 - 9AM until 6PM on Saturday, and 9AM until 4PM on Sunday.

The 19th annual FossilFest 2006 BRINGS the ICE AGE BACK to Florida!

The Florida State Fairgrounds Special Events Center will go back in time to an era when mammoths, saber-toothed cats, giant wolves, sharks the size of school buses, and cavemen ruled Florida's peninsula.

Admission is \$5.00 for adults, children 12 and under are free.

(www.tampabayfossilclub.com)

VENICE SHARK TOOTH FESTIVAL

Friday - April 8, 2005, 4 p.m.-9 p.m.

Saturday - April 9, 2005, 10 a.m.-9 p.m.,

Sunday - April 10, 2005 10 a.m.-5 p.m.

The Sharks Tooth Festival takes place each Spring against the back drop of Venice's best sharks tooth hunting beach. It's a weekend of food, fossils, arts & crafts, music and fun for the whole family. (<http://www.venice-fla.com/index.htm>)

Directions from I75: Take I-75 to Exit 193 (old 35), Jacaranda Blvd. (from the South, make a left off the exit; from the North make a right off the exit.) Take a right on to Venice Ave. Continue straight, crossing over the Venice Ave. bridge and through the Venice retail business section, to Harbor Drive. Turn left (South) on Harbor Drive and continue until you reach the festival. CAN'T MISS IT !

UPCOMING SHOWS

FEBRUARY	FEBRUARY	FEBRUARY
17th - 19th Vero Beach Treasure coast Rock and Gem Society 32nd annual Gem and Jewelry Show Vero beach Community Center 14th Ave and 23rd Street The 17th -12 to 5 / 18th - 10 to 5 / 19th - 10 to 4	March 3rd - 5 Largo, Florida Suncoast Gem and Mineral Society Minnreg Building 6340 126th Ave. 3rd and 4th - 10 to 6 5th - 10 to 5	March 7th - 9th Clearwater, Florida Suncoast Gem and Mineral Society Minnreg Center 8136 22nd Ave. North 7th and 8th - 10 to 6 9th - 10 to 5

Show News

Lots of things were discussed at last month's meeting and will be brought up at the general meeting. There are still several committee positions open so if you are interested in helping out, please see Carl. The Show is basically what keeps the club going financially. We need your help and input for the success of this show. Since this show will be combined with the Eastern Federation annual meeting it will be a big event. If anyone would like to help and work with our Show Committee, our next meeting is Tuesday, February 21st, at Don Ramons on U.S.1 south of Forest Blvd. on the west side of the street at 7:00 p.m. If you have any ideas or questions see Carl or call him at 641-4493.

Gemstone Notes

The Beryl Family

By Lee Krenz



Beryl is a mineral with several colorful varieties i.e. morganite (pink), heliodor (yellow), aquamarine (light blue), goshenite (colorless), and the most highly valued of all green gemstones, emerald. In addition, very rare and seldom seen as a cut stone is a variety of red beryl which is also referred to as bixbite. Beryl has a hardness of 7 1/2 on the Mohs Scale and readily lends itself to all forms of jewelry. Almost all beryl is treated in some form or another to enhance or even change its color as is frequently the case with aquamarines which generally come out of the ground a pale green color. Beryl is found in several locations throughout the world, especially in the South American countries of Colombia and Brazil, the only exception being bixbite which is found in the American Northwest. There will be several examples of beryl displayed for your viewing pleasure at the conclusion of the program at our next meeting on February 16. The display will be highlighted by a brilliant 3 1/2 carat trillion cut heliodor. More on various gemstones in the next issue of the Rockhound in March.

Librarian Still Needed

Now that we finally have the library open at the someone to take on the general meetings. If you are duties as newsletter editor interested please contact we are still looking for a Chris Koch by phone at 714- Librarian for the club. Since 6222 or e-mail at we now have a key we are Fishman002@aol.com. looking for someone to have



SHOP NEWS

The shop is ready for classes!!! Classes are anxiously waiting to start. We will have a class interest sign-up form at this month's meeting. We also need someone to coordinate the classes as Suzie does not have the time. We also need some dedicated shop stewards. If you are interested please see or call Michelle at 561/969-3291.

COMPETATIVE EXHIBITING

BY WILLIAM GRIMES

William Grimes is a past president of the Gem and Mineral Society of the Palm Beaches (GMSPB), has served in the past as exhibits chairman for the GMSPB, and Houston Gem and Mineral Society, for several years in the 1970's as Set up chairman for the GMSPB. Bill has exhibited competitively since he was a junior member of the Tampa Bay Gem And Mineral Society and as the EFMLS Chairman for the Mineral Exchange committee .

Many years ago people would put together exhibits of what they did, or collected and exhibit them at their local shows. As the regional and national federations were formed these exhibitors would often compete to see who was best. The problem of course was that there were no rules that were uniform across the country. Eventually the American Federation formed the uniform rules committee and over these many years the present rules are the result. One of the aims of uniform rules is to improve the quality of exhibits. Better exhibits create a reason for the public to come.

Eastern Federation will be having their annual convention at our show next year. There are those who will want to compete with the best of the best in the Eastern United States. Exhibitors will come from as far away as Maine to show off what they have. Truth be told it is almost the only way to compete with the best of the entire country. Back in 1991 during my term as president Joanne and I traveled to Tampa with 6 competitive exhibits. The Tampa show (my home club) was hosting Eastern and American Federation. Of the six exhibits five received scores high enough to be entered in the American Federation competition. Unfortunately none earned a trophy, though they missed them by only a few points. For us this was a learning experience, and good fun.

When we host the Eastern Federation Convention and show here, it will mark the 31 anniversary

of when Joanne and I met. I exhibited here that year. Will there be members of our club able to compete with the best of Eastern Federation? You bet. Despite the fact that Joanne and I have been inactive for several years, we have still come to the show, we still feel that this is our club, and we will exhibit. Regrettably Over the past ten years or so the Quantity as well as the quality of the exhibits at our shows have declined. Does this mean that our club members are not cutting Cabochons, or perhaps they are not faceting, or making jewelry, Perhaps they are not collecting minerals or fossils, or maybe they just do not want to show off what they do. For some people the chance to earn a trophy is one reason to compete, for others it is just the desire to put together something beautiful and have others recognize your effort. One of the good things about competition is that each exhibitor is judged against a standard. Striving to meet that standard is one of the reasons that the specimens in our mineral collections are of such high quality. In order to compete we had to learn what the differences between a nice specimen and a superb specimen were. Lack of competition and judging by qualified judges is also one of the reasons that our cases have not been shown in many years, and why they are coming out of the cabinet now.

I would like to challenge our club members. Download the uniform rules from the AFMS web site, <http://www.amfed.org> look over them. Come to our show and see if you can tell what cases are good enough to be following those rules. I am sure that you will find it east to tell, then ask your self Is competition a good thing? Maybe next year you might want to compete as a novice, that is where you begin. Who knows maybe with exhibits there is more for the public to look at, and maybe there will be more of the public there.

1st Vice President Still Needed

We have not received any applications for the 1st Vice President Position. The 1st Vice President is responsible for running the meeting in the event the President is not able to do so. If this is the case, I will provide an agenda. If you are interested in this position, please submit a letter of your interest and a list of your qualifications by the February Meeting.

This can be done in person to a board member or by sending it to the Society's P.O. Box. Once all of the applications have been received, the board will make a decision on who will be appointed to that position. Please consider this as this is an important position for the club and should not be left vacant.

FIRST FIELD TRIP OF THE YEAR!

Saturday AND Sunday MARCH 10th & 11th, 2006

Cost - \$20 per person. Children under 12 are free but must be accompanied by an adult at all times and be WELL BEHAVED !

Hours -from 8:00 AM till 5 PM, rain or shine ! Check the weather and dress accordingly.

DIRECTIONS:

From WPB and SOUTH - take I-95 north to the Blue Heron Exit, go west. It will run right into Rt. 710 (the Beeline Hwy), take that north-ish through Indiantown and then into the town of Okeechobee. Make a right at Rt. 411 (after the McDonald's - pit stop !) and go north about 20 miles or so past dairy farms and lots of trees then.....

OR take I-95 north to the Rt. 68 / Orange Ave. exit (it is right after the Rt. 70 / Okeechobee exit in Ft. Pierce). There is a RaceTrack gas station there for a pit stop ! Go west until it dead-ends at Rt. 441 (about 27 miles). Make a right and go north about 3 miles or so past dairy farms and lots of trees then.....

THEN turn right on 304th St. (there is a small sign that says "Ft. Drum Cemetery" and "Ft. Drum Crystal Mine" just before the road)

From the North - take the TPK. to the Yeehaw Junction exit, go west to Rt. 441 and go south about 15-20 minutes. The Ft. Drum Diner will be on your right. Go about 2 miles south and turn left on 304th St. (there is a small sign that says "Ft. Drum Cemetery" and "Ft. Drum Crystal Mine" right at SE corner the road)

THEN go about 3 miles and on the left you will see the Crystal Mine sign again. Pull into the entrance at the metal gates. Someone will be there to collect your money and direct you in have you sign a liability release and direct you in. Eddie Rucks' cell is 863/634-4579 if you get lost.

COLLECT: Rare calcite crystals and shells AND fossils (various teeth, bones, vertebrates, etc.)

CALCITE - (1) 5-gallon bucket full and (1) large specimen per person.

FOSSILS – no limit !

BRING: 5-gallon buckets (a cooler on wheels is GREAT), hammers, chisels, scratching tools, pry bars, trowel, small shovel, baggies and paper to wrap specimens, hat, food, sunscreen, drinks, safety glasses, chairs, umbrellas and towels. The coquina rock in the quarry is tricky in some places to walk on and there is a small stream meandering through it with a lot of wet areas so wear heavy gloves, sturdy shoes (boots) and long pants while collecting in the quarry pit. The fossil/shell piles by the parking lot and by the port-o-lets by the lake are easily accessible and great for kids or physically- challenged.

The **luxurious** restroom accommodations are located behind any tree or around any hill. A couple of port-o-lets are in "working" condition but not near the dig site. Toilet paper is optional but it is suggested you bring your own - just in case.

CONTACT:

Michelle Renne' @ 561/969-3291 or e-mail at FGMR4@aol.com for more information.

Her cell phone number is 561/644-2323 or Eddie Rucks @ 863/634-4579.

MEMBERSHIP DUES

- Junior Membership - \$10.00
(Under Age 18)
- Single Membership - \$15.00
(Over Age 18)
- Family Membership - \$25.00
(Includes Children Under Age 18)

Membership expires on December 31st each year. To renew your membership, make your check or money order out to:

Gem & Mineral Society of the Palm Beaches and mail to:

Membership Secretary
Gem & Mineral Society
P.O. Box 18095
West Palm Beach, FL 33416

NAME TAGS

Name tags are available from the Membership Secretary. The cost per name tag is \$6.00.

IF YOU HAVE A NAME TAG, PLEASE WEAR IT. IF NOT, PLEASE ORDER YOURS TODAY!

CLUB VESTS

Club vests can be ordered from Wearguard at 1-800-388-3300.

Order the following:

Color: BL Blue
Unisex sizes: XS,S,M,L,XL,XXL
Style: 348
Price: \$19.99 (plus \$6.50 S&H)

These vests are plain blue vests.

You will need to purchase a Society patch at a General Membership Meeting

OFFICERS AND DIRECTORS FOR 2006

OFFICERS

President*	Chris Koch	642-0809
1st Vice President*	OPEN	
2nd Vice President*	Lee Krenz	744-5196
Secretary*	Michelle Renee`	969-3291
Treasurer*	Barbara Ringhiser	588-5458

DIRECTORS

Past President*	Jack Stamper	964-4710
Past President*	Harold Shonkwiler	586-2026
Show Chairman*	Carl Bengtson	641-4493

COMMITTEE CHAIRPEOPLE

Class Coordinator	Susie Monada	487-8296
Club Patches & Pins	Lucette Chicoine	967-9938
Field Trips	Michelle Renee`	969-3291
Historians	Bill & Florallee Stein	684-0950
Hostess	Coralie Norvell	965-4748
Junior Program	OPEN	
Librarian	OPEN	
Media (video & photos)	Harold Shonkwiler	586-2026
Membership*	Ingrid Webster	793-8646
Newsletter Editor*	Mary Barrenechea	969-6056
Programs	Lee Krenz	744-5196
Refreshments	Debbie Anderson	965-9279
Special Projects Raffle	Junior Members	
Sunshine Committee	Terry Koplin	848-5885
Social Events	OPEN	
Shop Stewards	OPEN	
Website Manager	Terry Koplin	848-5885

* Denotes a Voting Board Member

The Gem & Mineral Society of the Palm Beaches, Inc. is a member of the Eastern and Southern Federations of Mineral and Lapidary Societies, and is affiliated with the American Federation of Mineralogical and Lapidary Societies. Monthly meetings are held on the third Thursday of the month excepting December which is held on the second Thursday. Meetings start at 7:30 PM at the West Palm Beach Garden Club across from the South Florida Science Museum in Dreher Park, West Palm Beach.