



The next General Membership Meeting will be held on

THURSDAY, June 15, 2006

**7:30 PM at the West Palm Beach Garden Club
(Dreher Park, across from the Science Museum)**

Program following the General Meeting

Lisa Kuntzman

Various Forms of Jewelry Making

Lisa is a longtime member of the Gem & Mineral Society and has been teaching classes for many years. Come and listen to her talk on various forms of jewelry making and find out when she plans on teaching her next class. In addition, I'm sure she will bring many examples of what she has made for your viewing pleasure.

The Rockhound
Volume 40, Issue 10
June 2006

Upcoming Programs

Hello, Society Members! Those of you in attendance at our May meeting were treated to an extremely interesting and informative program presented by Mr. Joseph Tenhagen concerning his recent trip to Dubai, where he had the opportunity of viewing and evaluating millions of dollars worth of rubies and diamonds. Our June meeting has a special treat in store for us. Lisa Kuntzman, a society member, will present a program on various forms of jewelry making. This promises to be a program not to be missed. Our July program will be our annual Show and Sell where members will have a chance to display and sell their wares. Please see me at the June meeting to reserve a table for a ten dollar fee and a raffle donation. Or call me at 561 744-5196 if that is more convenient. The Show and Sell will be on July 20. I hope to see you on June 15 for our next meeting.

Lee Krenz

What's Inside

Door Prizes &
Raffle Items
See Page 2 for more details.

Upcoming Shows

See Page 4 for more details.

Show Workday,
Sunday July 2nd
See Page 4 for more details.

Gemstone Notes

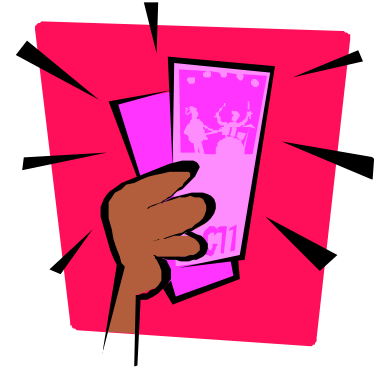
By Lee Krenz
See Page 5 for more details.

**CLASSES ARE
FINALLY HERE**
See Page 6 for more details.

Door Prizes and Raffle Items

Please remember, every person that arrives by 7:30 will receive a FREE door prize ticket. Last Month the auction items brought in \$20. If anyone has any items they would like to donate for door prizes or auction items please give them to Barbara.

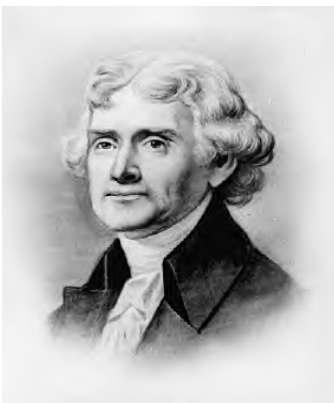
This month the door prizes will be: a bracelet made of woven beads and a rose petal pendant that has been dipped in resin. The raffle prizes will be: a sterling silver rhodochrosite and black onyx earrings and a necklace and bracelet of pearls and sparkling beads. Don't miss out on these items as once they all will go by the end of the night!



PRESIDENT'S MESSAGE

"Never put off till tomorrow what you can do today."

~ Thomas Jefferson



Summer is definitely here and it has come on in its fury with the earliest named storm in 40 years. Let's hope this is a light year in comparison to the past couple.

June has also brought on some milestones in both my professional and personal life. Summer camp had begun again making it the 11th year that I have been involved in the Summer Camps at the Science Museum. In addition, June 10th marked a decade of full time employment at the Museum. A few days later on June 12th I celebrated two years of marriage with my wife.

In addition our first full week of Science Camp this year had a chemistry theme which meant I was going to be the

primary instructor. I spent the week teaching 30 classes on topics such as slime making, rocks that glow (on fluorescent minerals), bubbleology and making liquid nitrogen ice cream to almost a hundred campers. Needless to say I'm wiped out.

I was hoping to take some time off in the next week or so to go collect some fossils on the Peace River, but Alberto is dropping a lot of rain. I will just have to see how high the river is next week. In addition, I plan on some other river diving for fossils, but that will be determined by storms and the rain that comes with them. I hope everyone else will be collecting in dryer climates.

Best Regards, Chris Koch

CLUB PURPOSE

To associate persons of the Palm Beach area of Florida who are interested in earth sciences, to work together as an organization in the gathering, cutting, displaying and studying of rocks, shells, artifacts and any kind of scientific objects of interest to the individual and the organization to promote community interest in these objects.

Copyright 2006
by the
Gem & Mineral Society
of the Palm Beaches, Inc.

Permission to reprint original material herein not otherwise copyrighted is granted provided credit is given to both author and publication.

Articles not bylined are by the Editor

Newsletter
Editor

Chris Koch

General Meeting Minutes

May 18, 2006

Meeting brought to order at 7:38 pm. 32 members present and 2 guests.

MINUTES -The minutes for March and April were motioned to be accepted and were approved.

TREASURER'S REPORT – was read and motion carried.

SUNSHINE – no bad news to report. If anyone hears of someone in need of a card, please contact Terry Koplin.

WEBSITE – Terry is constantly updating it with more information and links to other related sites. Our newsletter is on it so if you didn't get one or lose it, now you can obtain one!

FIELD TRIPS – summer is here and it's toooo hot for the "pit". The Peace Rive is still accessible but as the rains arrive, so does the increasing depth of the river.

CLASSES – see the lists on the side table and sign up for those you are interested in. If there is a class your are interested in that isn't listed or if you can teach or know of someone who can teach as class, let Michelle Renne' know.

CALENDAR – Michelle will have the monthly calendars again listing the meetings, socials, workshops and classes.

MEMBERSHIP – Ingrid wasn't present but Michelle had app's for new and renewals. We had one renewal.

SHOW- there is a new person in charge at the Fair Grounds who seems very friendly and cooperative. Many vendors are all ready signed and paid up. Thanks to our members who helped promote the club at the Frank Cox Show last month. If anyone goes to a show, call the Bengtsons to get flyers to distribute. We need more demonstrators at the show. Barbara Ringheiser has been VERY busy getting information on the Eastern Federation. We will be the "hosts" at our show !

SHOW COMMITTEE MEETING – next Monday at Scooters Restaurant in the Greenwood Shopping Center south of Forest Hill Blvd. on Congress at 6:30pm. Come for dinner and help plan the show!

EXHIBIT CASE WORKSHOP – Sunday, July 2 there will be a repair/examination workshop for the cases we use at the shows. It will be from 11-4pm at the Garden Club. The club will supply chicken and those attending are asked to bring a side dish, plates, utensils, drinks, the usual.

PROGRAM – tonight, Joe Tenhagen will do a program on his recent visit to Dubai, Africa. Next month Lisa Kuntzmann will discuss jewelry making.

APRIL STEAK PICNIC – thanks again to JACK Stamper and his family for their expert cooking and coordination of the food, grill and cooking. And, our resident Auctioneer, Jack, brought in \$400!

AGAIN – we have to ask that every one is considerate when someone is talking up front during the meeting or giving a presentation. If you MUST talk, please go outside or you will be escorted out.

WILLIAM HOLLAND – still accepting applications. See Michelle. The "winning" member will be announced at the next meeting.



Show Workday, Sunday, July 2nd

SHOW NEWS

of the heat and

Board, tired



something to do?

humidity, looking for

SECOND NOTICE!!! The show committee has planned a working social for **Sunday, July 2**. We will meet at the Garden Club at 11am to see what condition our show display cases are in. We know that many of them are in need of work! We will be assessing and repairing what we can, scrapping what we can't. That was the work part. **Now for the social part, we will be providing chicken and would like you to provide the pot luck. We are asking everyone who is coming to**

bring a dessert or covered dish --- salads, casseroles, baked beans, or your favorite creation and their own eating utensils and drinks (we'll make a pot of coffee to go with dinner and dessert and supply the ice for drinks). We will work a little, eat a little, work a little, and eat a little. The idea here is to have some fun while we refurbish the display cases. And if you are inclined to put up a display at the show, be it competitive or just informational and you want to select your case right then, you can! We encourage you to pick a case, take it home and spend some time working out your display. If you want, we can put your name on a case and reserve it in storage for you as well.

We need a rough count so we have enough chicken, so sign up to bring a dish at the May or June meeting or if you are busy call Deb Bengtson 641-4493 by Friday June 30 and let her know that you are coming. Can't make it for lunch; come by for dessert. **We will be there from 11 am to 4 pm.** Everyone is welcome and everyone will be helpful with the cases even if you think you don't know what to do. We'll learn together and have some good food and fun while we do!

UPCOMING SHOWS

JUNE	AUGUST	NOVEMBER
June 23rd - 25th Jacksonville, Florida Jacksonville Jewelry, Bead and Mineral Show Jacksonville Agricultural Fairgrounds 510 Fairgrounds Place 10:00 AM - 6:00 PM Daily Hal Parsons, 813-745-0858 jewelryelmar@aol.com	August 18th - 20th Vero Beach, Florida Gem, Jewelry, Mineral & Bead Show Vero Beach Community Center 14th Ave. & 23rd St. 18th 1-6; 19th & 20th 10-5 Anita Lane, 321-723-0742 Lane Enterprise, Inc.	November 11th - 12th Melbourne, Florida 30th Annual Parade of Gems Show Canaveral Mineral & Gem Society Melbourne Auditorium 625 Hibiscus Ave. 10:00 AM - 5:00PM Daily Anita Lane, 321-723-0742

CLASSIFIEDS

Starting this month we will have a CLASSIFIED section in the newsletter. This service is FREE to members, but I prefer receiving the ads via email if at all possible. The deadline for the next month will be the first day of each month. I would ask that you limit the ads to 35 words.

WANTED - someone to flat lap polish several pieces of geodes and slabs of petrified wood. Please call Alan Meltzer at 561/471-3491.

WANTED - used vibrating flat laps and pans to use to polish agatized coral and geodes. Please call Chris Koch at 561-714-6222 if you have a working flat lap you want to get rid of.

Gemstone Notes

MALACHITE

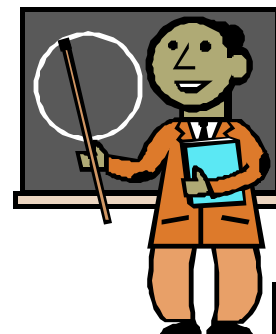
By Lee Krenz



Malachite is predominantly found in opaque masses usually banded in different shades of green in agate-like patterns. Its color is derived from copper. Crystals are too small for faceting but the material is carved or polished in many ways to reveal the alternating bands of light and dark green. When used in jewelry, it is usually cut in cabochon style or as beads. However, it has many uses such as in figurines, mosaics, boxes, and as an accent in interior decorating, as notable seen in some of the Czarist palaces in Russia. Due to its perfect cleavage and low hardness (3.5-4 on the Mohs scale), malachite can easily break and scratch. Nevertheless, the beauty of malachite objects can be breathtaking. Malachite occurs in small quantities worldwide and in larger quantities in copper mining areas. The nation of Zaire in Africa is the most important producer of the gem material. There will be some examples of malachite for your viewing pleasure after the program at our June meeting.

Upcoming Classes

See the list for available classes. All Classes will be prepaid when you signed up once the classes are scheduled. No refunds unless the class is canceled or if you find someone to take your place. If there is a class you'd like to learn or teach, please contact Michelle Renne' at 561/969-3291 or at FGMR4@aol.com.



SHOP NEWS

The shop is open and ready for you ! There is a \$5 Shop Charge to help defray the cost of maintenance. (it's still a great deal and we are one of the few clubs WITH a shop!). Every year you must sign a waiver. There is a Sign-In book you must sign every time you use the shop (even for classes).

CLASSES ARE FINALLY HERE

CLASSES AVAILABLE
50% OF THE COST GOES TO THE CLUB

CLASS	TEACHER	PHONE #	COST	DAY / TIME
Art Clay Silver	Michelle Renne'	561/969-3291	\$135 (incl. materials)	Sat., July 15, 10-4 pm
Beaded Cabachon	Inez Ancel	561/641-9994	TBD	TBD
Beaded Embellished Bracelet	Inez Ancel	561/641-9994	TBD	TBD
Cabachon Making	Harold Shonkwiler	561/914-0415	TBD	TBD
Chain Making	Still Needed	N/A	N/A	N/A
Enameling	Michelle Renne'	561/969-3291	TBD	TBD
Faceting	KC Foster	561/968-5287	TBD	TBD
Fused Glass – beginner	Frank Hecker	561/742-4337	TBD	TBD
Non-Torch Forged Metal	Lisa Kuntzman	561/967-7153	TBD	TBD
Silversmithing	Michelle Renne'	561/969-3291	TBD	TBD
Stained Glass	Still Needed	N/A	N/A	N/A
Torched Glass Beads	Jack Stamper	561/964-4710	TBD	TBD
Viking Knit (wire)	Lisa Kuntzman	561/967-7153	TBD	TBD

- Some classes will be scheduled when the teachers have enough students signed up.
- The Club receives ½ of the “class fee” – class materials are a separate charge.
- There is no \$5 “shop charge” for classes.
- If you're interested in a class NOT listed or can TEACH a class, please contact Michelle Renne' at 561/969-3291 or at FGMR4@aol.com.

June 2006

Open Shop 9AM-12PM	Mon	Tue	Wed	Thu	Fri	Sat
				1	2	3
4	5	6	7 Board Meeting 7PM	8	9	10
11	12	13	14	15 General Meeting 7:30PM	16	17 Open Shop 9AM-12PM Jeff Ursillo
18	19	20	21 Open Shop 6PM-9PM Harold S.	22	23	24 Open Shop 9AM-12PM Jeff Ursillo
25	26 Show Meeting 7PM	27 Open Shop 9AM-12PM Frank Hecker	28	29	30	

July 2006

Sun	Mon	Tue	Wed	Thu	Fri	Sat
						1 Open Shop 9AM-12PM Jeff Ursillo
2 Workday/Social 11AM-4PM Garden Club	3	4 Open Shop 9AM-12PM Frank Hecker	5 Board Meeting 7PM	6	7	8 Open Shop 9AM-12PM Jeff Ursillo
9	10	11 Open Shop 9AM-12PM Frank Hecker	12 Open Shop 7PM-9PM Michelle Renee'	13	14	15 Art Clay Silver 10AM-4PM Michelle Renee'
16	17	18 Open Shop 9AM-12PM Frank Hecker	19	20 General Meeting 7:30PM	21	22 Open Shop 9AM-12PM Jeff Ursillo
23	24 Show Meeting 7PM	25 Open Shop 9AM-12PM Frank Hecker	26 Open Shop 7PM-9PM Michelle Renee'	27	28	29 Open Shop 9AM-12PM Jeff Ursillo
30	31					

MEMBERSHIP DUES

- Junior Membership - \$10.00
(Under Age 18)
- Single Membership - \$15.00
(Over Age 18)
- Family Membership - \$25.00
(Includes Children Under Age 18)

Membership expires on December 31st each year. To renew your membership, make your check or money order out to:

Gem & Mineral Society of the Palm Beaches and mail to:

Membership Secretary
Gem & Mineral Society
P.O. Box 18095
West Palm Beach, FL 33416

NAME TAGS

Name tags are available from the Membership Secretary. The cost per name tag is \$6.00.

IF YOU HAVE A NAME TAG, PLEASE WEAR IT. IF NOT, PLEASE ORDER YOURS TODAY!

CLUB VESTS

Club vests can be ordered from Wearguard at 1-800-388-3300.

Order the following:

Color: BL Blue
Unisex sizes: XS,S,M,L,XL,XXL
Style: 348
Price: \$19.99 (plus \$6.50 S&H)

These vests are plain blue vests.

You will need to purchase a Society patch at a General Membership Meeting

OFFICERS AND DIRECTORS FOR 2006

OFFICERS

President*	Chris Koch	642-0809
1st Vice President*	Bob Durney	
2nd Vice President*	Lee Krenz	744-5196
Secretary*	Michelle Renee`	969-3291
Treasurer*	Barbara Ringhiser	588-5458

DIRECTORS

Past President*	Jack Stamper	964-4710
Past President*	Harold Shonkwiler	586-2026
Show Chairman*	Carl Bengtson	641-4493

COMMITTEE CHAIRPEOPLE

Class Coordinator	Susie Monada	487-8296
Club Patches & Pins	Lucette Chicoine	967-9938
Field Trips	Michelle Renee`	969-3291
Historians	Bill & Florallee Stein	684-0950
Hostess	Coralie Norvell	965-4748
Junior Program	OPEN	
Librarian		
Media (video & photos)	Harold Shonkwiler	586-2026
Membership*	Ingrid Webster	793-8646
Newsletter Editor*	Chris Koch	714-6222
Programs	Lee Krenz	744-5196
Refreshments	Debbie Anderson	965-9279
Special Projects Raffle	Junior Members	
Sunshine Committee	Terry Koplin	848-5885
Social Events	OPEN	
Shop Stewards	OPEN	
Website Manager	Terry Koplin	848-5885

* Denotes a Voting Board Member

The Gem & Mineral Society of the Palm Beaches, Inc. is a member of the Eastern and Southern Federations of Mineral and Lapidary Societies, and is affiliated with the American Federation of Mineralogical and Lapidary Societies. Monthly meetings are held on the third Thursday of the month excepting December which is held on the second Thursday. Meetings start at 7:30 PM at the West Palm Beach Garden Club across from the South Florida Science Museum in Dreher Park, West Palm Beach.